



**LABORATORY GROWN DIAMOND REPORT**

May 26, 2026  
 IGI Report Number **LG799619321**  
 Description **LABORATORY GROWN DIAMOND**  
 Shape and Cutting Style **CUT CORNERED RECTANGULAR MODIFIED  
BRILLIANT**  
 Measurements **7.15 X 4.92 X 3.03 MM**

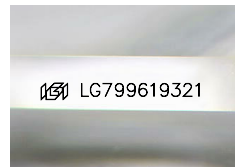
**GRADING RESULTS**

Carat Weight **0.89 CARAT**  
 Color Grade **D**  
 Clarity Grade **VVS 1**

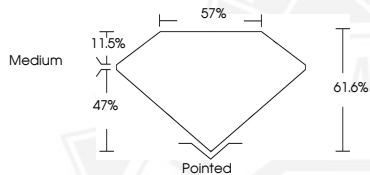
**ADDITIONAL GRADING INFORMATION**

Polish **EXCELLENT**  
 Symmetry **EXCELLENT**  
 Fluorescence **NONE**  
 Inscription(s) **IGI LG799619321**

Comments: As Grown - No indication of post-growth treatment.  
 This Laboratory Grown Diamond was created by High Pressure High  
 Temperature (HPHT) growth process.  
 Type II



Sample Image Used



May 26, 2026

IGI Report Number **LG799619321**  
**CUT CORNERED RECTANGULAR  
MODIFIED BRILLIANT  
LABORATORY GROWN DIAMOND**  
**7.15 X 4.92 X 3.03 MM**  
 Carat Weight **0.89 CARAT**  
 Color Grade **D**  
 Clarity Grade **VVS 1**  
 Polish **EXCELLENT**  
 Symmetry **EXCELLENT**  
 Fluorescence **NONE**  
 Inscription(s) **IGI LG799619321**

Comments: As Grown - No indication of post-growth treatment. This Laboratory Grown Diamond was created by High Pressure High Temperature (HPHT) growth process. Type II



May 26, 2026

IGI Report Number **LG799619321**  
**CUT CORNERED RECTANGULAR  
MODIFIED BRILLIANT  
LABORATORY GROWN DIAMOND**  
**7.15 X 4.92 X 3.03 MM**  
 Carat Weight **0.89 CARAT**  
 Color Grade **D**  
 Clarity Grade **VVS 1**  
 Polish **EXCELLENT**  
 Symmetry **EXCELLENT**  
 Fluorescence **NONE**  
 Inscription(s) **IGI LG799619321**

Comments: As Grown - No indication of post-growth treatment. This Laboratory Grown Diamond was created by High Pressure High Temperature (HPHT) growth process. Type II



THIS DOCUMENT WAS PRODUCED WITH THE FOLLOWING SECURITY MEASURES: SPECIAL DOCUMENT PAPER, INK SCREENS, WATERMARK, BACKGROUND DESIGNS, HOLOGRAM AND OTHER SECURITY FEATURES NOT LISTED AND DO EXCEED DOCUMENT SECURITY INDUSTRY GUIDELINES.