



**ELECTRONIC COPY**

LG799619099  
Report verification at igi.org



May 25, 2026  
IGI Report Number **LG799619099**  
Description **LABORATORY GROWN DIAMOND**  
Shape and Cutting Style **ROUND BRILLIANT**  
Measurements **8.67 - 8.71 X 5.39 MM**  
**GRADING RESULTS**  
Carat Weight **2.51 CARATS**  
Color Grade **D**  
Clarity Grade **INTERNALLY FLAWLESS**  
Cut Grade **IDEAL**

May 25, 2026  
IGI Report Number **LG799619099**  
Description **LABORATORY GROWN DIAMOND**  
Shape and Cutting Style **ROUND BRILLIANT**  
Measurements **8.67 - 8.71 X 5.39 MM**

**GRADING RESULTS**

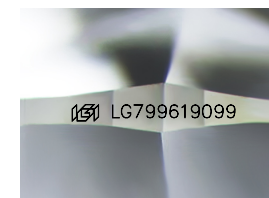
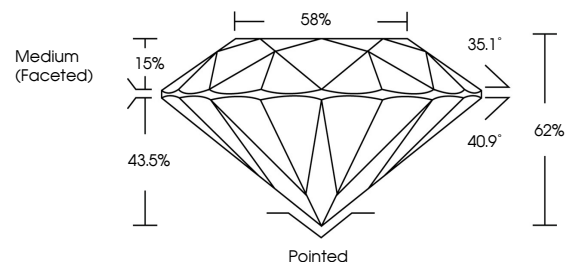
Carat Weight **2.51 CARATS**  
Color Grade **D**  
Clarity Grade **INTERNALLY FLAWLESS**  
Cut Grade **IDEAL**

**ADDITIONAL GRADING INFORMATION**

Polish **EXCELLENT**  
Symmetry **EXCELLENT**  
Fluorescence **NONE**  
Inscription(s) **LG799619099**

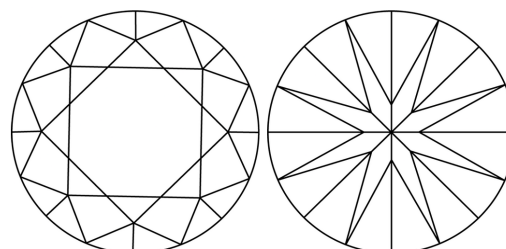
Comments: HEARTS & ARROWS  
As Grown - No indication of post-growth treatment.  
This Laboratory Grown Diamond was created by High Pressure High Temperature (HPHT) growth process.  
Type II

**PROPORTIONS**



Sample Image Used

**CLARITY CHARACTERISTICS**



**KEY TO SYMBOLS**

Red symbols indicate internal characteristics.  
Green symbols indicate external characteristics.

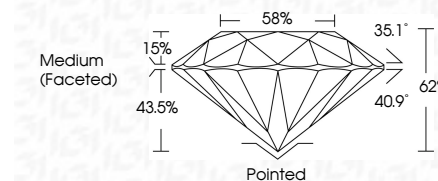


**COLOR**

D E F G H I J Faint Very Light Light

**CLARITY**

| FL       | IF                  | VS <sup>1-2</sup>           | VS <sup>1-2</sup>      | SI <sup>1-2</sup> | I <sup>1-3</sup> |
|----------|---------------------|-----------------------------|------------------------|-------------------|------------------|
| Flawless | Internally Flawless | Very Very Slightly Included | Very Slightly Included | Slightly Included | Included         |



**ADDITIONAL GRADING INFORMATION**

Polish **EXCELLENT**  
Symmetry **EXCELLENT**  
Fluorescence **NONE**  
Inscription(s) **LG799619099**  
Comments: HEARTS & ARROWS  
As Grown - No indication of post-growth treatment.  
This Laboratory Grown Diamond was created by High Pressure High Temperature (HPHT) growth process.  
Type II



**IGI**

May 25, 2026  
IGI Report No LG799619099  
**ROUND BRILLIANT**  
8.67 - 8.71 X 5.39 MM  
2.51 CARATS  
Color Grade **D**  
Clarity Grade **IF**  
Depth **IDEAL**  
Table **62%**  
Girdle **68%**  
Medium (Faceted)  
Culet **Pointed**  
Polish **EXCELLENT**  
Symmetry **EXCELLENT**  
Fluorescence **NONE**  
Inscriptions(s) **LG799619099**  
Comments: HEARTS & ARROWS  
As Grown - No indication of post-growth treatment.  
This Laboratory Grown Diamond was created by High Pressure High Temperature (HPHT) growth process.  
Type II