



May 21, 2026

IGI Report Number LG799619062
SQUARE EMERALD CUT
LABORATORY GROWN DIAMOND
5.46 X 5.46 X 3.47 MM

Carat Weight 0.95 CARAT
Color Grade F
Clarity Grade VVS 2
Polish EXCELLENT
Symmetry EXCELLENT
Fluorescence NONE
Inscription(s) IGI LG799619062

Comments: As Grown - No indication of post-growth treatment. This Laboratory Grown Diamond was created by High Pressure High Temperature (HPHT) growth process. Type II

LABORATORY GROWN DIAMOND REPORT

May 21, 2026
IGI Report Number **LG799619062**
Description **LABORATORY GROWN DIAMOND**
Shape and Cutting Style **SQUARE EMERALD CUT**
Measurements **5.46 X 5.46 X 3.47 MM**

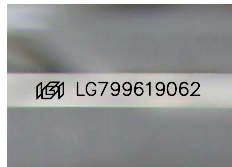
GRADING RESULTS

Carat Weight 0.95 CARAT
Color Grade F
Clarity Grade VVS 2

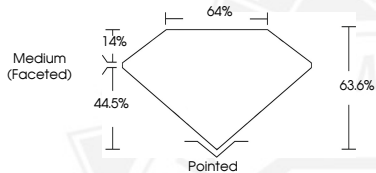
ADDITIONAL GRADING INFORMATION

Polish EXCELLENT
Symmetry EXCELLENT
Fluorescence NONE
Inscription(s) IGI LG799619062

Comments: As Grown - No indication of post-growth treatment. This Laboratory Grown Diamond was created by High Pressure High Temperature (HPHT) growth process. Type II



Sample Image Used



May 21, 2026

IGI Report Number LG799619062
SQUARE EMERALD CUT
LABORATORY GROWN DIAMOND
5.46 X 5.46 X 3.47 MM

Carat Weight 0.95 CARAT
Color Grade F
Clarity Grade VVS 2
Polish EXCELLENT
Symmetry EXCELLENT
Fluorescence NONE
Inscription(s) IGI LG799619062

Comments: As Grown - No indication of post-growth treatment. This Laboratory Grown Diamond was created by High Pressure High Temperature (HPHT) growth process. Type II



THIS DOCUMENT WAS PRODUCED WITH THE FOLLOWING SECURITY MEASURES: SPECIAL DOCUMENT PAPER, INK SCREENS, WATERMARK, BACKGROUND DESIGNS, HOLOGRAM AND OTHER SECURITY FEATURES NOT LISTED AND DO EXCEED DOCUMENT SECURITY INDUSTRY GUIDELINES.