



LABORATORY GROWN DIAMOND REPORT

May 15, 2026
 IGI Report Number **LG799618865**
 Description **LABORATORY GROWN DIAMOND**
 Shape and Cutting Style **ROUND BRILLIANT**
 Measurements **5.93 - 5.97 X 3.70 MM**

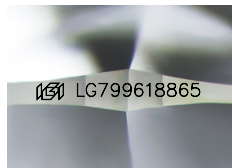
GRADING RESULTS

Carat Weight **0.81 CARAT**
 Color Grade **FANCY VIVID PINK**
 Clarity Grade **VVS 1**
 Cut Grade **IDEAL**

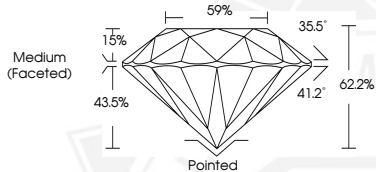
ADDITIONAL GRADING INFORMATION

Polish **EXCELLENT**
 Symmetry **EXCELLENT**
 Fluorescence **SLIGHT**
 Inscription(s) **IGI LG799618865**

Comments: This Laboratory Grown Diamond was created by High Pressure High Temperature (HPHT) growth process. Indications of post-growth treatment.



Sample Image Used



May 15, 2026

IGI Report Number **LG799618865**
ROUND BRILLIANT
LABORATORY GROWN DIAMOND
5.93 - 5.97 X 3.70 MM

Carat Weight **0.81 CARAT**
 Color Grade **FANCY VIVID PINK**
 Clarity Grade **VVS 1**
 Cut Grade **IDEAL**
 Polish **EXCELLENT**
 Symmetry **EXCELLENT**
 Fluorescence **SLIGHT**
 Inscription(s) **IGI LG799618865**

Comments: This Laboratory Grown Diamond was created by High Pressure High Temperature (HPHT) growth process. Indications of post-growth treatment.



May 15, 2026

IGI Report Number **LG799618865**
ROUND BRILLIANT
LABORATORY GROWN DIAMOND
5.93 - 5.97 X 3.70 MM

Carat Weight **0.81 CARAT**
 Color Grade **FANCY VIVID PINK**
 Clarity Grade **VVS 1**
 Cut Grade **IDEAL**
 Polish **EXCELLENT**
 Symmetry **EXCELLENT**
 Fluorescence **SLIGHT**
 Inscription(s) **IGI LG799618865**

Comments: This Laboratory Grown Diamond was created by High Pressure High Temperature (HPHT) growth process. Indications of post-growth treatment.



THIS DOCUMENT WAS PRODUCED WITH THE FOLLOWING SECURITY MEASURES: SPECIAL DOCUMENT PAPER, INK SCREENS, WATERMARK, BACKGROUND DESIGNS, HOLOGRAM AND OTHER SECURITY FEATURES NOT LISTED AND DO EXCEED DOCUMENT SECURITY INDUSTRY GUIDELINES.