



ELECTRONIC COPY

LG799616656
Report verification at igi.org



June 1, 2026
IGI Report Number **LG799616656**
Description **LABORATORY GROWN DIAMOND**
Shape and Cutting Style **ROUND BRILLIANT**
Measurements **9.80 - 9.86 X 5.91 MM**
GRADING RESULTS
Carat Weight **3.51 CARATS**
Color Grade **E**
Clarity Grade **VS 1**
Cut Grade **IDEAL**

June 1, 2026
IGI Report Number **LG799616656**
Description **LABORATORY GROWN DIAMOND**
Shape and Cutting Style **ROUND BRILLIANT**
Measurements **9.80 - 9.86 X 5.91 MM**

GRADING RESULTS

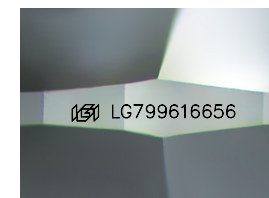
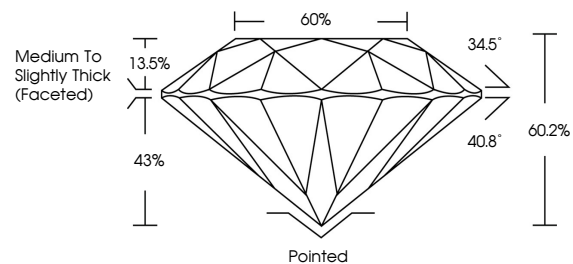
Carat Weight **3.51 CARATS**
Color Grade **E**
Clarity Grade **VS 1**
Cut Grade **IDEAL**

ADDITIONAL GRADING INFORMATION

Polish **EXCELLENT**
Symmetry **EXCELLENT**
Fluorescence **NONE**
Inscription(s) **IGI LG799616656**

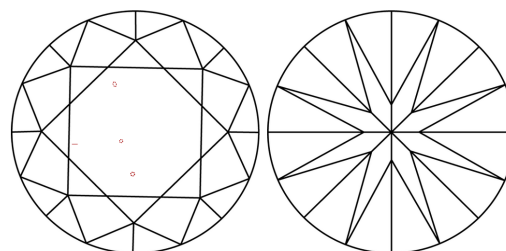
Comments: This Laboratory Grown Diamond was created by Chemical Vapor Deposition (CVD) growth process.
Type IIa

PROPORTIONS



Sample Image Used

CLARITY CHARACTERISTICS



KEY TO SYMBOLS

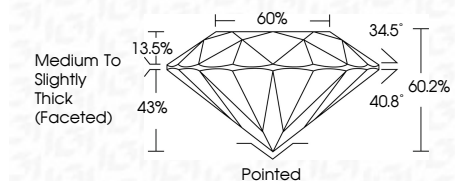
Red symbols indicate internal characteristics.
Green symbols indicate external characteristics.

COLOR

D E F G H I J Faint Very Light Light

CLARITY

| FL | IF | VS ¹⁻² | VS ¹⁻² | SI ¹⁻² | I ¹⁻³ |
|----------|---------------------|-----------------------------|------------------------|-------------------|------------------|
| Flawless | Internally Flawless | Very Very Slightly Included | Very Slightly Included | Slightly Included | Included |



ADDITIONAL GRADING INFORMATION

Polish **EXCELLENT**
Symmetry **EXCELLENT**
Fluorescence **NONE**
Inscription(s) **IGI LG799616656**
Comments: This Laboratory Grown Diamond was created by Chemical Vapor Deposition (CVD) growth process.
Type IIa



June 1, 2026
IGI Report No LG799616656
ROUND BRILLIANT
9.80 - 9.86 X 5.91 MM
3.51 CARATS
E
VS 1
IDEAL
60.2%
60%
Medium To Slightly Thick (Faceted)
Pointed
EXCELLENT
EXCELLENT
NONE
IGI LG799616656
Comments: This Laboratory Grown Diamond was created by Chemical Vapor Deposition (CVD) growth process.
Type IIa