



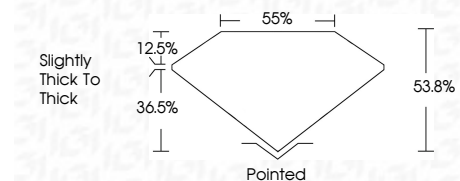
ELECTRONIC COPY

LG799614454
Report verification at igi.org



May 12, 2026
IGI Report Number **LG799614454**
Description **LABORATORY GROWN DIAMOND**
Shape and Cutting Style **TRIANGULAR BRILLIANT**
Measurements **9.02 X 9.02 X 4.85 MM**

GRADING RESULTS
Carat Weight **2.16 CARATS**
Color Grade **FANCY VIVID PINK**
Clarity Grade **VVS 2**



ADDITIONAL GRADING INFORMATION
Polish **EXCELLENT**
Symmetry **EXCELLENT**
Fluorescence **STRONG**
Inscription(s) **IGI LG799614454**
Comments: This Laboratory Grown Diamond was created by Chemical Vapor Deposition (CVD) growth process. Indications of post-growth treatment.



May 12, 2026
IGI Report No LG799614454
TRIANGULAR BRILLIANT
9.02 X 9.02 X 4.85 MM
2.16 CARATS
FANCY VIVID PINK
VVS 2
53.8%
36.5%
Slightly thick to thick
Pointed
EXCELLENT
EXCELLENT
STRONG
IGI LG799614454
Comments: This Laboratory Grown Diamond was created by Chemical Vapor Deposition (CVD) growth process. Indications of post-growth treatment.

LABORATORY GROWN DIAMOND REPORT

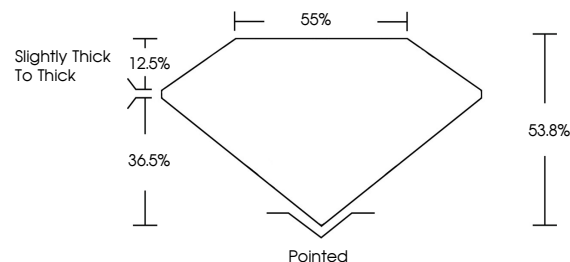
May 12, 2026
IGI Report Number **LG799614454**
Description **LABORATORY GROWN DIAMOND**
Shape and Cutting Style **TRIANGULAR BRILLIANT**
Measurements **9.02 X 9.02 X 4.85 MM**

GRADING RESULTS
Carat Weight **2.16 CARATS**
Color Grade **FANCY VIVID PINK**
Clarity Grade **VVS 2**

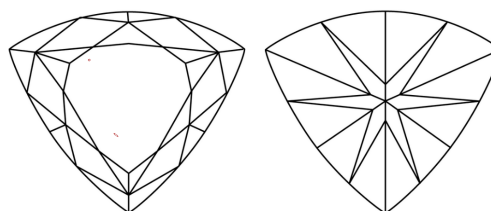
ADDITIONAL GRADING INFORMATION
Polish **EXCELLENT**
Symmetry **EXCELLENT**
Fluorescence **STRONG**
Inscription(s) **IGI LG799614454**

Comments: This Laboratory Grown Diamond was created by Chemical Vapor Deposition (CVD) growth process. Indications of post-growth treatment.

PROPORTIONS

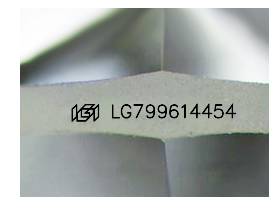


CLARITY CHARACTERISTICS



KEY TO SYMBOLS

Red symbols indicate internal characteristics.
Green symbols indicate external characteristics.



Sample Image Used

COLOR

D E F G H I J Faint Very Light Light

CLARITY

FL	IF	VVS ¹⁻²	VS ¹⁻²	SI ¹⁻²	I ¹⁻³
Flawless	Internally Flawless	Very Very Slightly Included	Very Slightly Included	Slightly Included	Included

