



ELECTRONIC COPY

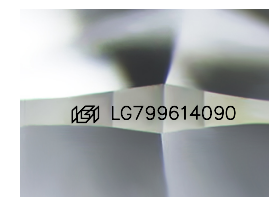
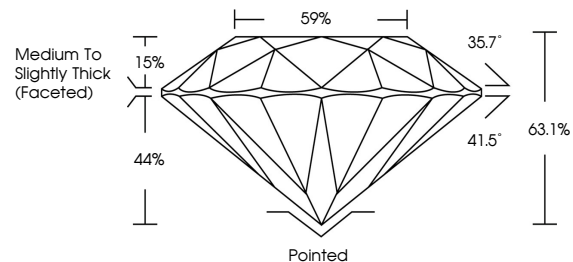
LG799614090
Report verification at igi.org



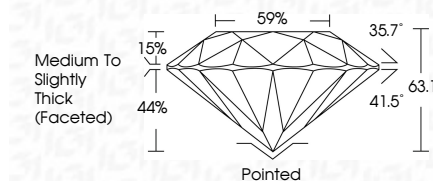
May 12, 2026
IGI Report Number **LG799614090**
Description **LABORATORY GROWN DIAMOND**
Shape and Cutting Style **ROUND BRILLIANT**
Measurements **6.32 - 6.36 X 4.00 MM**
GRADING RESULTS
Carat Weight **1.00 CARAT**
Color Grade **FANCY VIVID BLUE**
Clarity Grade **VS 2**
Cut Grade **EXCELLENT**

May 12, 2026
IGI Report Number **LG799614090**
Description **LABORATORY GROWN DIAMOND**
Shape and Cutting Style **ROUND BRILLIANT**
Measurements **6.32 - 6.36 X 4.00 MM**
GRADING RESULTS
Carat Weight **1.00 CARAT**
Color Grade **FANCY VIVID BLUE**
Clarity Grade **VS 2**
Cut Grade **EXCELLENT**

PROPORTIONS



Sample Image Used



ADDITIONAL GRADING INFORMATION

Polish **VERY GOOD**
Symmetry **EXCELLENT**
Fluorescence **NONE**
Inscription(s) **IGI LG799614090**

Comments: This Laboratory Grown Diamond was created by Chemical Vapor Deposition (CVD) growth process.
Indications of post-growth treatment.

COLOR

D E F G H I J Faint Very Light Light

CLARITY

| FL | IF | VS ¹⁻² | VS ¹⁻² | SI ¹⁻² | I ¹⁻³ |
|----------|---------------------|-----------------------------|------------------------|-------------------|------------------|
| Flawless | Internally Flawless | Very Very Slightly Included | Very Slightly Included | Slightly Included | Included |

ADDITIONAL GRADING INFORMATION

Polish **VERY GOOD**
Symmetry **EXCELLENT**
Fluorescence **NONE**
Inscription(s) **IGI LG799614090**
Comments: This Laboratory Grown Diamond was created by Chemical Vapor Deposition (CVD) growth process.
Indications of post-growth treatment.



May 12, 2026
IGI Report No LG799614090
ROUND BRILLIANT
6.32 - 6.36 X 4.00 MM
1.00 CARAT
FANCY VIVID BLUE
VS 2
EXCELLENT
63.1%
59%
Medium To Slightly Thick (Faceted)
Pointed
VERY GOOD
EXCELLENT
NONE
IGI LG799614090
Comments: This Laboratory Grown Diamond was created by Chemical Vapor Deposition (CVD) growth process.
Indications of post-growth treatment.