



May 12, 2026

IGI Report Number LG799613022
**CUT CORNERED RECTANGULAR
MODIFIED BRILLIANT
LABORATORY GROWN DIAMOND**
6.15 X 4.71 X 3.00 MM

LABORATORY GROWN DIAMOND REPORT

May 12, 2026

IGI Report Number

LG799613022

Description

LABORATORY GROWN DIAMOND

Shape and Cutting Style

CUT CORNERED RECTANGULAR MODIFIED
BRILLIANT

Measurements

6.15 X 4.71 X 3.00 MM

GRADING RESULTS

Carat Weight

0.75 CARAT

Color Grade

FANCY VIVID PINK

Clarity Grade

VS 1

ADDITIONAL GRADING INFORMATION

Polish

VERY GOOD

Symmetry

GOOD

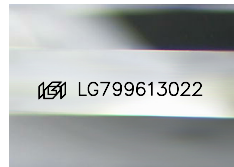
Fluorescence

STRONG

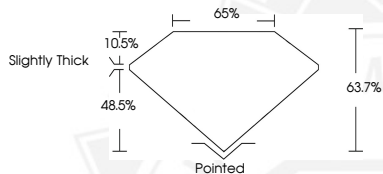
Inscription(s)

LG799613022

Comments: This Laboratory Grown Diamond was created by
Chemical Vapor Deposition (CVD) growth process.
Indications of post-growth treatment.



Sample Image Used



May 12, 2026

IGI Report Number LG799613022
**CUT CORNERED RECTANGULAR
MODIFIED BRILLIANT
LABORATORY GROWN DIAMOND**
6.15 X 4.71 X 3.00 MM

Carat Weight 0.75 CARAT
Color Grade FANCY VIVID PINK
Clarity Grade VS 1
Polish VERY GOOD
Symmetry GOOD
Fluorescence STRONG
Inscription(s) LG799613022

Comments: This Laboratory Grown Diamond was created by
Chemical Vapor Deposition (CVD) growth process. Indications of
post-growth treatment.



THIS DOCUMENT WAS PRODUCED WITH THE FOLLOWING SECURITY MEASURES: SPECIAL DOCUMENT PAPER, INK SCREENS, WATERMARK, BACKGROUND DESIGNS, HOLOGRAM AND OTHER SECURITY FEATURES NOT LISTED AND DO EXCEED DOCUMENT SECURITY INDUSTRY GUIDELINES.