



ELECTRONIC COPY

LG799612791
Report verification at igi.org

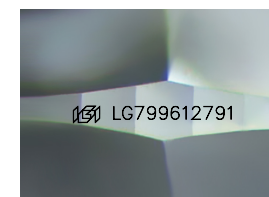
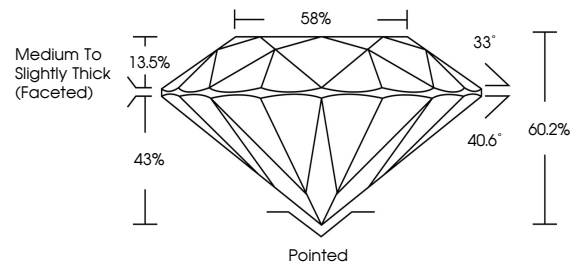


May 9, 2026
IGI Report Number LG799612791
Description LABORATORY GROWN DIAMOND
Shape and Cutting Style ROUND BRILLIANT
Measurements 6.63 - 6.67 X 4.01 MM

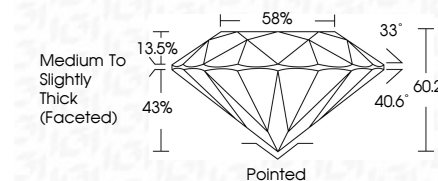
GRADING RESULTS
Carat Weight 1.09 CARAT
Color Grade E
Clarity Grade VS 1
Cut Grade IDEAL

May 9, 2026
IGI Report Number LG799612791
Description LABORATORY GROWN DIAMOND
Shape and Cutting Style ROUND BRILLIANT
Measurements 6.63 - 6.67 X 4.01 MM
GRADING RESULTS
Carat Weight 1.09 CARAT
Color Grade E
Clarity Grade VS 1
Cut Grade IDEAL

PROPORTIONS



Sample Image Used



ADDITIONAL GRADING INFORMATION
Polish VERY GOOD
Symmetry EXCELLENT
Fluorescence NONE
Inscription(s) IGI LG799612791

Comments: This Laboratory Grown Diamond was created by Chemical Vapor Deposition (CVD) growth process. Type IIa

COLOR

D E F G H I J Faint Very Light Light

CLARITY

FL IF VS 1-2 VS 2-3 SI 1-2 I 1-3
Flawless Internally Flawless Very Very Slightly Included Very Slightly Included Slightly Included Included

ADDITIONAL GRADING INFORMATION

Polish VERY GOOD
Symmetry EXCELLENT
Fluorescence NONE
Inscription(s) IGI LG799612791
Comments: This Laboratory Grown Diamond was created by Chemical Vapor Deposition (CVD) growth process. Type IIa



May 9, 2026
IGI Report No LG799612791
ROUND BRILLIANT
6.63 - 6.67 X 4.01 MM
1.09 CARAT
E
Color Grade
VS 1
Clarity Grade
IDEAL
Depth 60.2%
Table 58%
Girdle Medium To Slightly Thick (Faceted)
Pointed
VERY GOOD
Polish
EXCELLENT
Symmetry
NONE
Fluorescence
IGI LG799612791
Inscriptions(s)
Comments: This Laboratory Grown Diamond was created by Chemical Vapor Deposition (CVD) growth process. Type IIa