



ELECTRONIC COPY

LG799609885 Report verification at igi.org



May 8, 2026 IGI Report Number LG799609885 Description LABORATORY GROWN DIAMOND Shape and Cutting Style CUT CORNERED RECTANGULAR MODIFIED BRILLIANT Measurements 10.38 X 7.13 X 4.83 MM GRADING RESULTS Carat Weight 3.07 CARATS Color Grade F Clarity Grade VVS 2

May 8, 2026 IGI Report Number LG799609885 Description LABORATORY GROWN DIAMOND Shape and Cutting Style CUT CORNERED RECTANGULAR MODIFIED BRILLIANT Measurements 10.38 X 7.13 X 4.83 MM

GRADING RESULTS

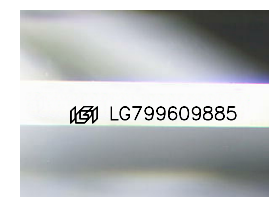
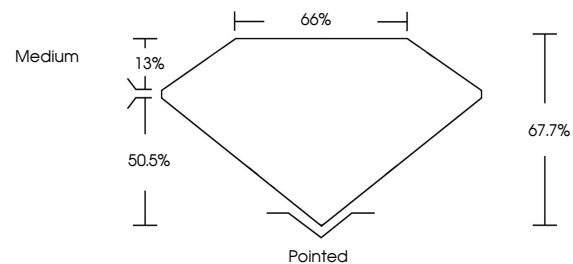
Carat Weight 3.07 CARATS Color Grade F Clarity Grade VVS 2

ADDITIONAL GRADING INFORMATION

Polish EXCELLENT Symmetry EXCELLENT Fluorescence NONE Inscription(s) IGI LG799609885

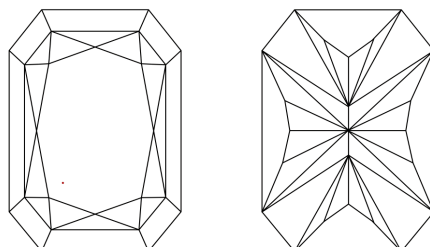
Comments: This Laboratory Grown Diamond was created by Chemical Vapor Deposition (CVD) growth process. Type IIa

PROPORTIONS



Sample Image Used

CLARITY CHARACTERISTICS



KEY TO SYMBOLS

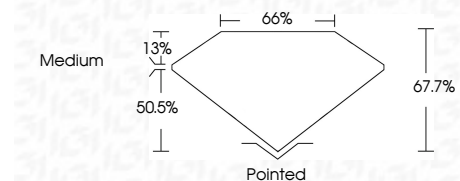
Red symbols indicate internal characteristics. Green symbols indicate external characteristics.

COLOR

D E F G H I J Faint Very Light Light

CLARITY

FL IF VVS 1-2 VS 1-2 SI 1-2 I 1-3 Flawless Internally Flawless Very Very Slightly Included Very Slightly Included Slightly Included Included



ADDITIONAL GRADING INFORMATION

Polish EXCELLENT Symmetry EXCELLENT Fluorescence NONE Inscription(s) IGI LG799609885 Comments: This Laboratory Grown Diamond was created by Chemical Vapor Deposition (CVD) growth process. Type IIa



May 8, 2026 IGI Report No LG799609885 CUT CORNERED RECT. MODIFIED BRILLIANT 10.38 X 7.13 X 4.83 MM 3.07 CARATS F VVS 2 67.7% 66% Medium Pointed EXCELLENT EXCELLENT NONE IGI LG799609885 Comments: This Laboratory Grown Diamond was created by Chemical Vapor Deposition (CVD) growth process. Type IIa