



**ELECTRONIC COPY**

LG799609340  
Report verification at igi.org



May 7, 2026

IGI Report Number **LG799609340**

Description **LABORATORY GROWN DIAMOND**

Shape and Cutting Style **ROUND BRILLIANT**

Measurements **7.96 - 8.00 X 5.04 MM**

**GRADING RESULTS**

Carat Weight **2.01 CARATS**

Color Grade **E**

Clarity Grade **VVS 2**

Cut Grade **EXCELLENT**

May 7, 2026

IGI Report Number **LG799609340**

Description **LABORATORY GROWN DIAMOND**

Shape and Cutting Style **ROUND BRILLIANT**

Measurements **7.96 - 8.00 X 5.04 MM**

**GRADING RESULTS**

Carat Weight **2.01 CARATS**

Color Grade **E**

Clarity Grade **VVS 2**

Cut Grade **EXCELLENT**

**ADDITIONAL GRADING INFORMATION**

Polish **EXCELLENT**

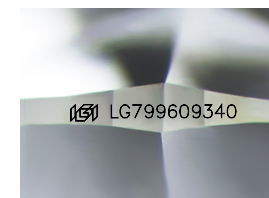
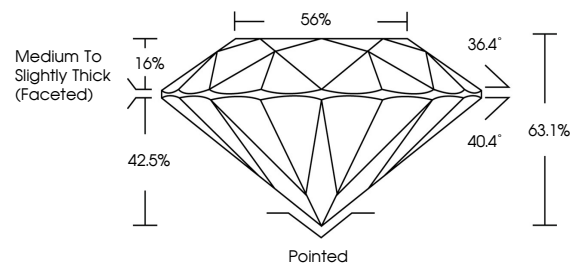
Symmetry **EXCELLENT**

Fluorescence **NONE**

Inscription(s) **LG799609340**

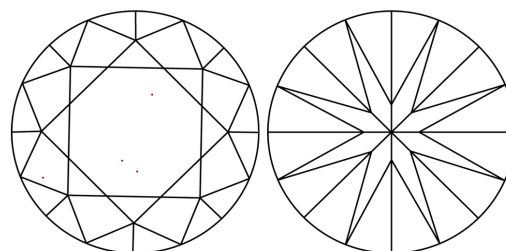
Comments: This Laboratory Grown Diamond was created by Chemical Vapor Deposition (CVD) growth process. Type IIa

**PROPORTIONS**



Sample Image Used

**CLARITY CHARACTERISTICS**



**KEY TO SYMBOLS**

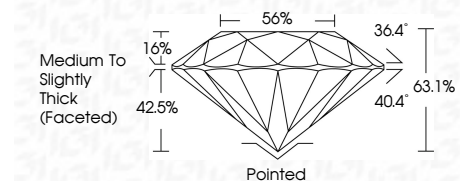
Red symbols indicate internal characteristics.  
Green symbols indicate external characteristics.

**COLOR**

D E F G H I J Faint Very Light Light

**CLARITY**

FL	IF	VVS <sup>1-2</sup>	VS <sup>1-2</sup>	SI <sup>1-2</sup>	I <sup>1-3</sup>
Flawless	Internally Flawless	Very Very Slightly Included	Very Slightly Included	Slightly Included	Included



**ADDITIONAL GRADING INFORMATION**

Polish **EXCELLENT**

Symmetry **EXCELLENT**

Fluorescence **NONE**

Inscription(s) **LG799609340**

Comments: This Laboratory Grown Diamond was created by Chemical Vapor Deposition (CVD) growth process. Type IIa



**IGI**



May 7, 2026	IGI Report No LG799609340	2.01 CARATS	E	VVS 2	63.1%	56%	Pointed	EXCELLENT	EXCELLENT	NONE	LG799609340
ROUND BRILLIANT	7.96 - 8.00 X 5.04 MM	Carat Weight	Color Grade	Clarity Grade	Depth	Table	Grade	Culet	Polish	Symmetry	Fluorescence
											Inscription(s)

Comments: This Laboratory Grown Diamond was created by Chemical Vapor Deposition (CVD) growth process. Type IIa