



ELECTRONIC COPY

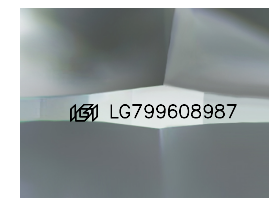
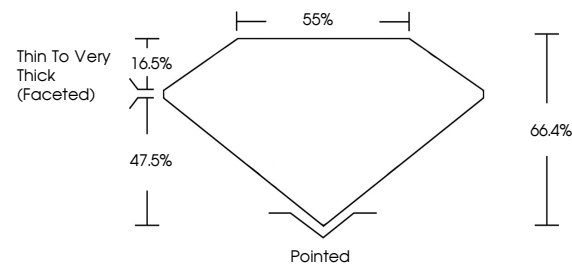
LG799608987
Report verification at igi.org



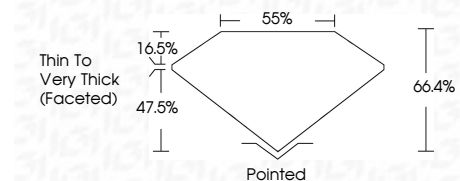
June 24, 2026
IGI Report Number **LG799608987**
Description **LABORATORY GROWN DIAMOND**
Shape and Cutting Style **CUSHION MODIFIED BRILLIANT**
Measurements **18.00 X 14.06 X 9.33 MM**
GRADING RESULTS
Carat Weight **20.51 CARATS**
Color Grade **H**
Clarity Grade **VS 2**

June 24, 2026
IGI Report Number **LG799608987**
Description **LABORATORY GROWN DIAMOND**
Shape and Cutting Style **CUSHION MODIFIED BRILLIANT**
Measurements **18.00 X 14.06 X 9.33 MM**

PROPORTIONS



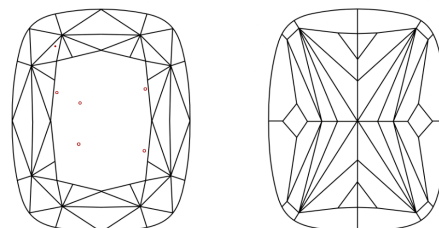
Sample Image Used



GRADING RESULTS

Carat Weight **20.51 CARATS**
Color Grade **H**
Clarity Grade **VS 2**

CLARITY CHARACTERISTICS



KEY TO SYMBOLS

Red symbols indicate internal characteristics.
Green symbols indicate external characteristics.

ADDITIONAL GRADING INFORMATION

Polish **EXCELLENT**
Symmetry **EXCELLENT**
Fluorescence **NONE**
Inscription(s) **IGI LG799608987**

Comments: This Laboratory Grown Diamond was created by Chemical Vapor Deposition (CVD) growth process.
Type IIa

COLOR

D E F G H I J Faint Very Light Light

CLARITY

| FL | IF | VS ¹⁻² | VS ¹⁻² | SI ¹⁻² | I ¹⁻³ |
|----------|---------------------|-----------------------------|------------------------|-------------------|------------------|
| Flawless | Internally Flawless | Very Very Slightly Included | Very Slightly Included | Slightly Included | Included |

ADDITIONAL GRADING INFORMATION

Polish **EXCELLENT**
Symmetry **EXCELLENT**
Fluorescence **NONE**
Inscription(s) **IGI LG799608987**
Comments: This Laboratory Grown Diamond was created by Chemical Vapor Deposition (CVD) growth process.
Type IIa



June 24, 2026
IGI Report No LG799608987
CUSHION MODIFIED BRILLIANT
18.00 X 14.06 X 9.33 MM
20.51 CARATS
H
VS 2
66.4%
47.5%
55%
Thin To Very Thick (Faceted)
Pointed
EXCELLENT
EXCELLENT
NONE
IGI LG799608987
Comments: This Laboratory Grown Diamond was created by Chemical Vapor Deposition (CVD) growth process.
Type IIa