



ELECTRONIC COPY

LG799608753
Report verification at igi.org



May 29, 2026
IGI Report Number **LG799608753**
Description **LABORATORY GROWN DIAMOND**
Shape and Cutting Style **CUT CORNERED
RECTANGULAR MODIFIED
BRILLIANT**

Measurements **7.06 X 5.55 X 3.94 MM**

GRADING RESULTS

Carat Weight **1.56 CARAT**
Color Grade **FANCY BLUE**
Clarity Grade **VS 1**

May 29, 2026
IGI Report Number **LG799608753**
Description **LABORATORY GROWN DIAMOND**
Shape and Cutting Style **CUT CORNERED RECTANGULAR
MODIFIED BRILLIANT**
Measurements **7.06 X 5.55 X 3.94 MM**

GRADING RESULTS

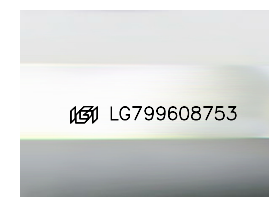
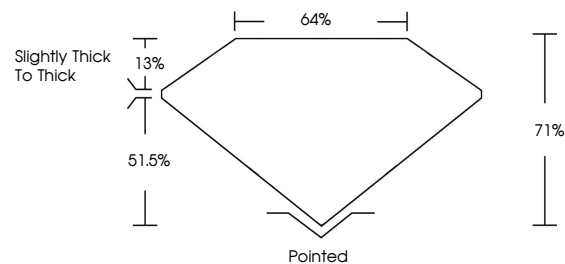
Carat Weight **1.56 CARAT**
Color Grade **FANCY BLUE**
Clarity Grade **VS 1**

ADDITIONAL GRADING INFORMATION

Polish **VERY GOOD**
Symmetry **VERY GOOD**
Fluorescence **NONE**
Inscription(s) **IGI LG799608753**

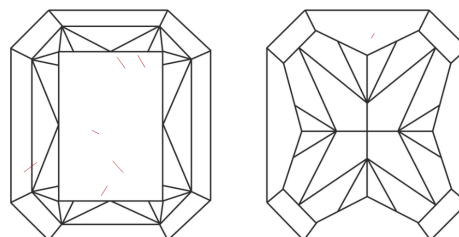
Comments: As Grown - No indication of post-growth treatment.
This Laboratory Grown Diamond was created by High Pressure High Temperature (HPHT) growth process.

PROPORTIONS



Sample Image Used

CLARITY CHARACTERISTICS



KEY TO SYMBOLS

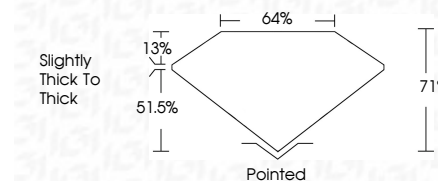
Red symbols indicate internal characteristics.
Green symbols indicate external characteristics.

COLOR

D E F G H I J Faint Very Light Light

CLARITY

FL	IF	VS ¹⁻²	VS ¹⁻²	SI ¹⁻²	I ¹⁻³
Flawless	Internally Flawless	Very Very Slightly Included	Very Slightly Included	Slightly Included	Included



ADDITIONAL GRADING INFORMATION

Polish **VERY GOOD**
Symmetry **VERY GOOD**
Fluorescence **NONE**
Inscription(s) **IGI LG799608753**
Comments: As Grown - No indication of post-growth treatment.
This Laboratory Grown Diamond was created by High Pressure High Temperature (HPHT) growth process.



May 29, 2026
IGI Report No. LG799608753
CUT CORNERED RECT. MODIFIED BRILLIANT
7.06 X 5.55 X 3.94 MM
1.56 CARAT
FANCY BLUE
VS 1
71%
64%
Slightly thick to thick
Polished
VERY GOOD
VERY GOOD
NONE
IGI LG799608753
Comments: As Grown - No indication of post-growth treatment.
This Laboratory Grown Diamond was created by High Pressure High Temperature (HPHT) growth process.