



ELECTRONIC COPY

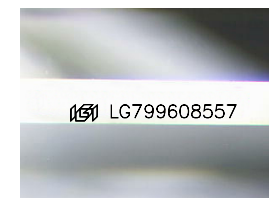
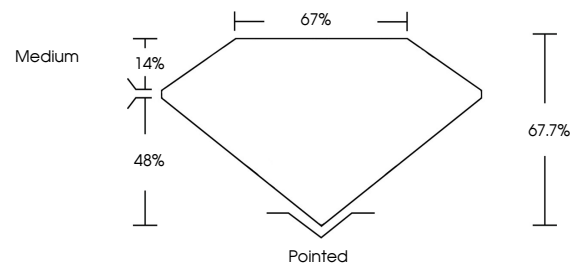
LG799608557
Report verification at igi.org



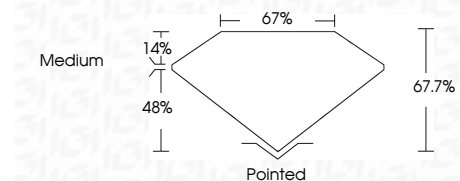
May 13, 2026
IGI Report Number **LG799608557**
Description **LABORATORY GROWN DIAMOND**
Shape and Cutting Style **CUT CORNERED
RECTANGULAR MODIFIED
BRILLIANT**
Measurements **8.56 X 6.01 X 4.07 MM**
GRADING RESULTS
Carat Weight **2.01 CARATS**
Color Grade **FANCY LIGHT BLUE**
Clarity Grade **VS 1**

May 13, 2026
IGI Report Number **LG799608557**
Description **LABORATORY GROWN DIAMOND**
Shape and Cutting Style **CUT CORNERED RECTANGULAR
MODIFIED BRILLIANT**
Measurements **8.56 X 6.01 X 4.07 MM**

PROPORTIONS



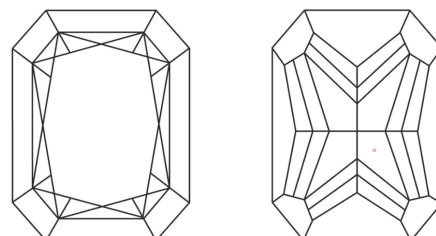
Sample Image Used



GRADING RESULTS

Carat Weight **2.01 CARATS**
Color Grade **FANCY LIGHT BLUE**
Clarity Grade **VS 1**

CLARITY CHARACTERISTICS



COLOR

D E F G H I J Faint Very Light Light

CLARITY

FL	IF	VS ¹⁻²	VS ¹⁻²	SI ¹⁻²	I ¹⁻³
Flawless	Internally Flawless	Very Very Slightly Included	Very Slightly Included	Slightly Included	Included

ADDITIONAL GRADING INFORMATION

Polish **EXCELLENT**
Symmetry **EXCELLENT**
Fluorescence **NONE**
Inscription(s) **IGI LG799608557**

ADDITIONAL GRADING INFORMATION

Polish **EXCELLENT**
Symmetry **EXCELLENT**
Fluorescence **NONE**
Inscription(s) **IGI LG799608557**
Comments: As Grown - No indication of post-growth treatment.
This Laboratory Grown Diamond was created by High Pressure High Temperature (HPHT) growth process.

KEY TO SYMBOLS

Red symbols indicate internal characteristics.
Green symbols indicate external characteristics.



May 13, 2026
IGI Report No LG799608557
CUT CORNERED RECT. MODIFIED BRILLIANT
8.56 X 6.01 X 4.07 MM
2.01 CARATS
FANCY LIGHT BLUE
VS 1
67.7%
67%
Medium
Pointed
EXCELLENT
EXCELLENT
NONE
IGI LG799608557
Comments: As Grown - No indication of post-growth treatment.
This Laboratory Grown Diamond was created by High Pressure High Temperature (HPHT) growth process.