



ELECTRONIC COPY

LG799608554
Report verification at igi.org



May 13, 2026
IGI Report Number **LG799608554**
Description **LABORATORY GROWN DIAMOND**

Shape and Cutting Style **PEAR MODIFIED BRILLIANT**
Measurements **10.97 X 6.49 X 4.12 MM**

GRADING RESULTS
Carat Weight **2.15 CARATS**
Color Grade **FANCY INTENSE BLUE**
Clarity Grade **VS 1**

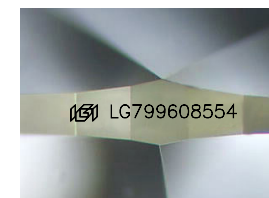
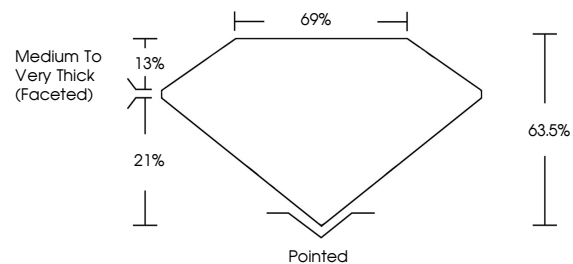
May 13, 2026
IGI Report Number **LG799608554**
Description **LABORATORY GROWN DIAMOND**
Shape and Cutting Style **PEAR MODIFIED BRILLIANT**
Measurements **10.97 X 6.49 X 4.12 MM**

GRADING RESULTS
Carat Weight **2.15 CARATS**
Color Grade **FANCY INTENSE BLUE**
Clarity Grade **VS 1**

ADDITIONAL GRADING INFORMATION
Polish **EXCELLENT**
Symmetry **EXCELLENT**
Fluorescence **NONE**
Inscription(s) **IGI LG799608554**

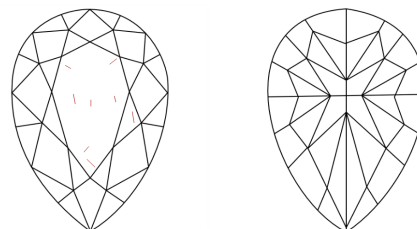
Comments: As Grown - No indication of post-growth treatment.
This Laboratory Grown Diamond was created by High Pressure High Temperature (HPHT) growth process.

PROPORTIONS



Sample Image Used

CLARITY CHARACTERISTICS



KEY TO SYMBOLS

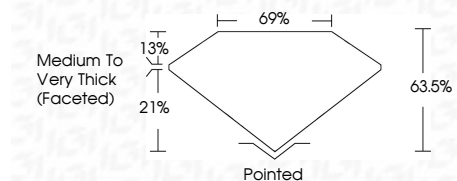
Red symbols indicate internal characteristics.
Green symbols indicate external characteristics.

COLOR

D E F G H I J Faint Very Light Light

CLARITY

FL	IF	VS ¹⁻²	VS ¹⁻²	SI ¹⁻²	I ¹⁻³
Flawless	Internally Flawless	Very Very Slightly Included	Very Slightly Included	Slightly Included	Included



ADDITIONAL GRADING INFORMATION

Polish **EXCELLENT**
Symmetry **EXCELLENT**
Fluorescence **NONE**
Inscription(s) **IGI LG799608554**
Comments: As Grown - No indication of post-growth treatment.
This Laboratory Grown Diamond was created by High Pressure High Temperature (HPHT) growth process.



May 13, 2026
IGI Report No LG799608554
PEAR MODIFIED BRILLIANT
10.97 X 6.49 X 4.12 MM
2.15 CARATS
FANCY INTENSE BLUE
VS 1
63.5%
69%
Medium to Very Thick (Faceted)
Pointed
EXCELLENT
EXCELLENT
NONE
IGI LG799608554

Comments: As Grown - No indication of post-growth treatment.
This Laboratory Grown Diamond was created by High Pressure High Temperature (HPHT) growth process.