



ELECTRONIC COPY

LG799607706
Report verification at igi.org



May 8, 2026
IGI Report Number: LG799607706
Description: LABORATORY GROWN DIAMOND
Shape and Cutting Style: CUSHION MODIFIED BRILLIANT
Measurements: 9.41 X 7.13 X 4.79 MM
GRADING RESULTS
Carat Weight: 2.53 CARATS
Color Grade: E
Clarity Grade: VVS 2

LABORATORY GROWN DIAMOND REPORT

May 8, 2026
IGI Report Number: LG799607706
Description: LABORATORY GROWN DIAMOND
Shape and Cutting Style: CUSHION MODIFIED BRILLIANT
Measurements: 9.41 X 7.13 X 4.79 MM

GRADING RESULTS

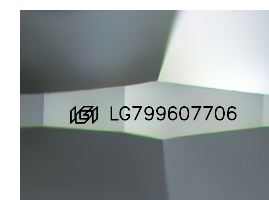
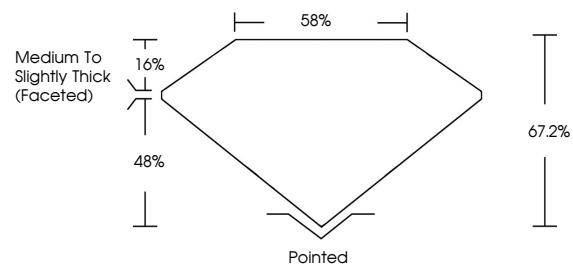
Carat Weight: 2.53 CARATS
Color Grade: E
Clarity Grade: VVS 2

ADDITIONAL GRADING INFORMATION

Polish: EXCELLENT
Symmetry: EXCELLENT
Fluorescence: NONE
Inscription(s): IGI LG799607706

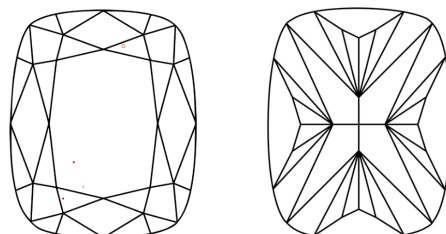
Comments: This Laboratory Grown Diamond was created by Chemical Vapor Deposition (CVD) growth process. Type IIa

PROPORTIONS



Sample Image Used

CLARITY CHARACTERISTICS



KEY TO SYMBOLS

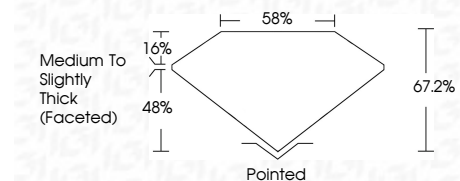
Red symbols indicate internal characteristics. Green symbols indicate external characteristics.

COLOR

D E F G H I J Faint Very Light Light

CLARITY

FL IF VVS 1-2 VS 1-2 SI 1-2 I 1-3
Flawless Internally Flawless Very Very Slightly Included Very Slightly Included Slightly Included Included



ADDITIONAL GRADING INFORMATION

Polish: EXCELLENT
Symmetry: EXCELLENT
Fluorescence: NONE
Inscription(s): IGI LG799607706
Comments: This Laboratory Grown Diamond was created by Chemical Vapor Deposition (CVD) growth process. Type IIa



May 8, 2026
IGI Report No: LG799607706
CUSHION MODIFIED BRILLIANT
9.41 X 7.13 X 4.79 MM
2.53 CARATS
E
VVS 2
67.2%
85%
Medium to Slightly Thick (Faceted)
Pointed
EXCELLENT
EXCELLENT
NONE
IGI LG799607706
Comments: This Laboratory Grown Diamond was created by Chemical Vapor Deposition (CVD) growth process. Type IIa