



**ELECTRONIC COPY**

LG799607057  
Report verification at igi.org



May 7, 2026  
IGI Report Number **LG799607057**  
Description **LABORATORY GROWN DIAMOND**  
Shape and Cutting Style **RECTANGULAR CUSHION MIXED CUT**  
Measurements **9.37 X 5.70 X 4.07 MM**  
**GRADING RESULTS**  
Carat Weight **2.09 CARATS**  
Color Grade **G**  
Clarity Grade **VS 1**

May 7, 2026  
IGI Report Number **LG799607057**  
Description **LABORATORY GROWN DIAMOND**  
Shape and Cutting Style **RECTANGULAR CUSHION MIXED CUT**  
Measurements **9.37 X 5.70 X 4.07 MM**

**GRADING RESULTS**

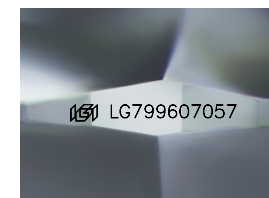
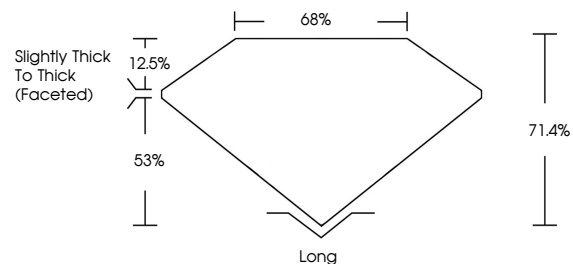
Carat Weight **2.09 CARATS**  
Color Grade **G**  
Clarity Grade **VS 1**

**ADDITIONAL GRADING INFORMATION**

Polish **EXCELLENT**  
Symmetry **EXCELLENT**  
Fluorescence **NONE**  
Inscription(s) **IGI LG799607057**

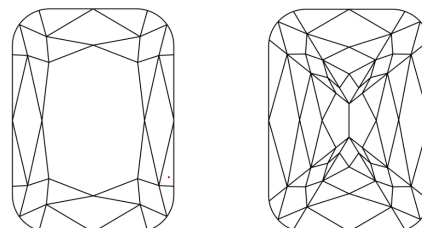
Comments: This Laboratory Grown Diamond was created by Chemical Vapor Deposition (CVD) growth process.  
Type IIa

**PROPORTIONS**



Sample Image Used

**CLARITY CHARACTERISTICS**



**KEY TO SYMBOLS**

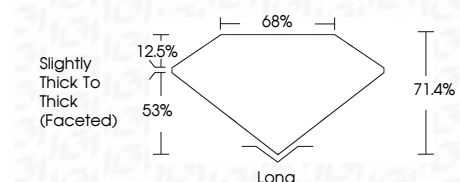
Red symbols indicate internal characteristics.  
Green symbols indicate external characteristics.

**COLOR**

D E F G H I J Faint Very Light Light

**CLARITY**

FL	IF	VS <sup>1-2</sup>	VS <sup>1-2</sup>	SI <sup>1-2</sup>	I <sup>1-3</sup>
Flawless	Internally Flawless	Very Very Slightly Included	Very Slightly Included	Slightly Included	Included



**ADDITIONAL GRADING INFORMATION**

Polish **EXCELLENT**  
Symmetry **EXCELLENT**  
Fluorescence **NONE**  
Inscription(s) **IGI LG799607057**  
Comments: This Laboratory Grown Diamond was created by Chemical Vapor Deposition (CVD) growth process.  
Type IIa



May 7, 2026  
IGI Report No **LG799607057**  
**RECTANGULAR CUSHION MIXED CUT**  
Carat Weight **2.09 CARATS**  
Color Grade **G**  
Clarity Grade **VS 1**  
Depth **71.4%**  
Table **65%**  
Girdle **Slightly Thick To Thick (Faceted)**  
Culet **Long**  
Polish **EXCELLENT**  
Symmetry **EXCELLENT**  
Fluorescence **NONE**  
Inscription(s) **IGI LG799607057**  
Comments: This Laboratory Grown Diamond was created by Chemical Vapor Deposition (CVD) growth process.  
Type IIa