



ELECTRONIC COPY

LG799606973
Report verification at igi.org



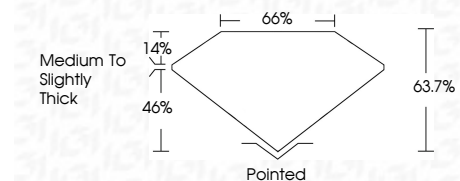
May 14, 2026
IGI Report Number LG799606973
Description LABORATORY GROWN DIAMOND

Shape and Cutting Style CUT CORNERED RECTANGULAR MODIFIED BRILLIANT

Measurements 7.38 X 6.84 X 4.36 MM

GRADING RESULTS

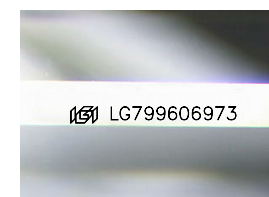
Carat Weight 2.00 CARATS
Color Grade FANCY INTENSE YELLOW
Clarity Grade VVS 2



ADDITIONAL GRADING INFORMATION

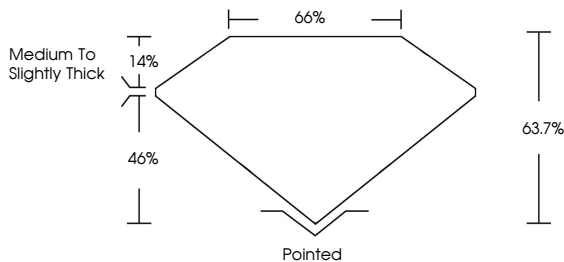
Polish EXCELLENT
Symmetry EXCELLENT
Fluorescence NONE

Inscription(s) LG799606973
Comments: This Laboratory Grown Diamond was created by Chemical Vapor Deposition (CVD) growth process.

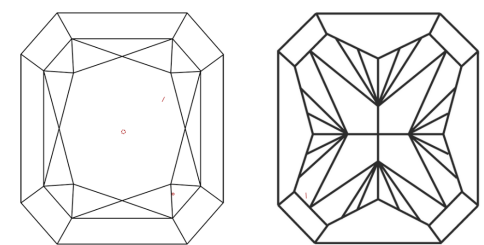


Sample Image Used

PROPORTIONS



CLARITY CHARACTERISTICS



KEY TO SYMBOLS

Red symbols indicate internal characteristics.
Green symbols indicate external characteristics.

COLOR

Color scale table with categories: D, E, F, G, H, I, J, Faint, Very Light, Light

CLARITY

Clarity scale table with categories: FL, IF, VVS 1-2, VS 1-2, SI 1-2, I 1-3, Flawless, Internally Flawless, Very Very Slightly Included, Very Slightly Included, Slightly Included, Included



May 14, 2026
IGI Report No LG799606973
CUT CORNERED RECT. MODIFIED BRILLIANT
7.38 X 6.84 X 4.36 MM
2.00 CARATS
FANCY INTENSE YELLOW
VVS 2
63.7%
65%
Medium to Slightly Thick
Pointed
EXCELLENT
EXCELLENT
NONE
IGI LG799606973
Comments: This Laboratory Grown Diamond was created by Chemical Vapor Deposition (CVD) growth process.