



**ELECTRONIC COPY**

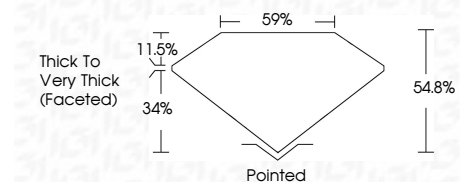
LG799606409  
Report verification at igi.org



May 12, 2026  
IGI Report Number **LG799606409**  
Description **LABORATORY GROWN DIAMOND**  
Shape and Cutting Style **HEART MODIFIED BRILLIANT**  
Measurements **10.25 X 11.10 X 6.08 MM**

**GRADING RESULTS**

Carat Weight **5.01 CARATS**  
Color Grade **FANCY VIVID PINK**  
Clarity Grade **VVS 2**



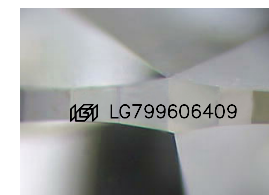
**ADDITIONAL GRADING INFORMATION**

Polish **EXCELLENT**  
Symmetry **EXCELLENT**  
Fluorescence **STRONG**  
Inscription(s) **IGI LG799606409**  
Comments: This Laboratory Grown Diamond was created by Chemical Vapor Deposition (CVD) growth process. Indications of post-growth treatment.



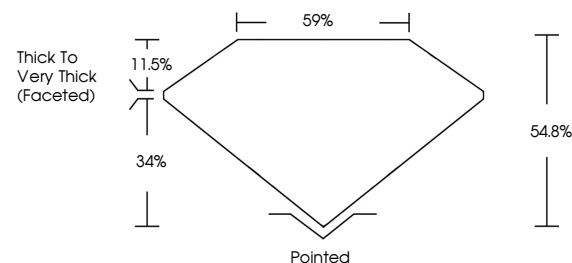
May 12, 2026  
IGI Report No **LG799606409**  
**HEART MODIFIED BRILLIANT**  
10.25 X 11.10 X 6.08 MM  
5.01 CARATS  
FANCY VIVID PINK  
VVS 2  
54.8%  
34%  
11.5%  
Thick to Very Thick (Faceted)  
Pointed  
EXCELLENT  
EXCELLENT  
STRONG  
IGI LG799606409

Comments: This Laboratory Grown Diamond was created by Chemical Vapor Deposition (CVD) growth process. Indications of post-growth treatment.

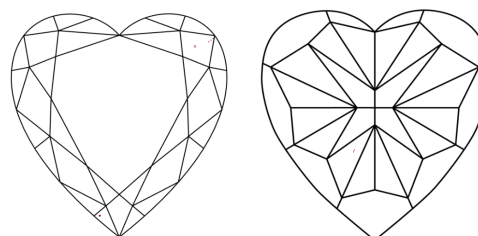


Sample Image Used

**PROPORTIONS**



**CLARITY CHARACTERISTICS**



**KEY TO SYMBOLS**

Red symbols indicate internal characteristics.  
Green symbols indicate external characteristics.

**COLOR**

D E F G H I J Faint Very Light Light

**CLARITY**

FL	IF	VVS <sup>1-2</sup>	VS <sup>1-2</sup>	SI <sup>1-2</sup>	I <sup>1-3</sup>
Flawless	Internally Flawless	Very Very Slightly Included	Very Slightly Included	Slightly Included	Included

