



May 7, 2026

IGI Report Number **LG799605243**

**OVAL BRILLIANT
LABORATORY GROWN DIAMOND
6.57 X 4.57 X 2.77 MM**

| | |
|----------------|------------------------|
| Carat Weight | 0.50 CARAT |
| Color Grade | D |
| Clarity Grade | I.F. |
| Polish | EXCELLENT |
| Symmetry | EXCELLENT |
| Fluorescence | NONE |
| Inscription(s) | IGI LG799605243 |

Comments: As Grown - No indication of post-growth treatment. This Laboratory Grown Diamond was created by High Pressure High Temperature (HPHT) growth process. Type II

LABORATORY GROWN DIAMOND REPORT

May 7, 2026
IGI Report Number **LG799605243**
Description **LABORATORY GROWN DIAMOND**
Shape and Cutting Style **OVAL BRILLIANT**
Measurements **6.57 X 4.57 X 2.77 MM**

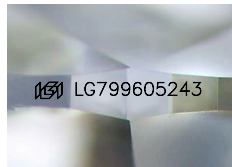
GRADING RESULTS

Carat Weight **0.50 CARAT**
Color Grade **D**
Clarity Grade **INTERNALLY FLAWLESS**

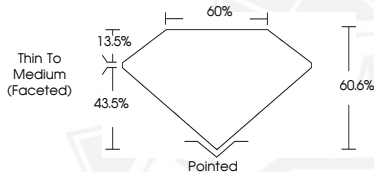
ADDITIONAL GRADING INFORMATION

Polish **EXCELLENT**
Symmetry **EXCELLENT**
Fluorescence **NONE**
Inscription(s) **IGI LG799605243**

Comments: As Grown - No indication of post-growth treatment. This Laboratory Grown Diamond was created by High Pressure High Temperature (HPHT) growth process. Type II



Sample Image Used



May 7, 2026

IGI Report Number **LG799605243**

**OVAL BRILLIANT
LABORATORY GROWN DIAMOND
6.57 X 4.57 X 2.77 MM**

| | |
|----------------|------------------------|
| Carat Weight | 0.50 CARAT |
| Color Grade | D |
| Clarity Grade | I.F. |
| Polish | EXCELLENT |
| Symmetry | EXCELLENT |
| Fluorescence | NONE |
| Inscription(s) | IGI LG799605243 |

Comments: As Grown - No indication of post-growth treatment. This Laboratory Grown Diamond was created by High Pressure High Temperature (HPHT) growth process. Type II



THIS DOCUMENT WAS PRODUCED WITH THE FOLLOWING SECURITY MEASURES: SPECIAL DOCUMENT PAPER, INK SCREENS, WATERMARK, BACKGROUND DESIGNS, HOLOGRAM AND OTHER SECURITY FEATURES NOT LISTED AND DO EXCEED DOCUMENT SECURITY INDUSTRY GUIDELINES.