



May 7, 2026

IGI Report Number LG799605216
ROUND BRILLIANT
LABORATORY GROWN DIAMOND
6.05 - 6.09 X 3.71 MM

0.84 CARAT
D
I.F.
IDEAL
EXCELLENT
EXCELLENT
NONE
IGI LG799605216

Comments: As Grown - No indication of post-growth treatment. This Laboratory Grown Diamond was created by High Pressure High Temperature (HPHT) growth process. Type II

LABORATORY GROWN DIAMOND REPORT

May 7, 2026
IGI Report Number **LG799605216**
Description **LABORATORY GROWN DIAMOND**
Shape and Cutting Style **ROUND BRILLIANT**
Measurements **6.05 - 6.09 X 3.71 MM**

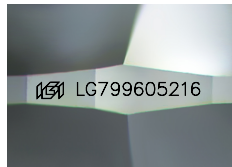
GRADING RESULTS

Carat Weight **0.84 CARAT**
Color Grade **D**
Clarity Grade **INTERNALLY FLAWLESS**
Cut Grade **IDEAL**

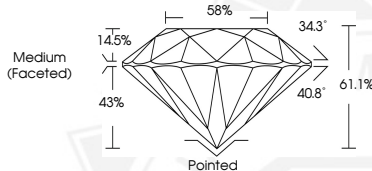
ADDITIONAL GRADING INFORMATION

Polish **EXCELLENT**
Symmetry **EXCELLENT**
Fluorescence **NONE**
Inscription(s) **IGI LG799605216**

Comments: As Grown - No indication of post-growth treatment. This Laboratory Grown Diamond was created by High Pressure High Temperature (HPHT) growth process. Type II



Sample Image Used



May 7, 2026

IGI Report Number LG799605216
ROUND BRILLIANT
LABORATORY GROWN DIAMOND
6.05 - 6.09 X 3.71 MM

0.84 CARAT
D
I.F.
IDEAL
EXCELLENT
EXCELLENT
NONE
IGI LG799605216

Comments: As Grown - No indication of post-growth treatment. This Laboratory Grown Diamond was created by High Pressure High Temperature (HPHT) growth process. Type II

THIS DOCUMENT WAS PRODUCED WITH THE FOLLOWING SECURITY MEASURES: SPECIAL DOCUMENT PAPER, INK SCREENS, WATERMARK, BACKGROUND DESIGNS, HOLOGRAM AND OTHER SECURITY FEATURES NOT LISTED AND DO EXCEED DOCUMENT SECURITY INDUSTRY GUIDELINES.