



May 7, 2026

IGI Report Number **LG799605138**

**OVAL BRILLIANT  
LABORATORY GROWN DIAMOND  
7.83 X 5.31 X 3.29 MM**

|                |                        |
|----------------|------------------------|
| Carat Weight   | <b>0.85 CARAT</b>      |
| Color Grade    | <b>D</b>               |
| Clarity Grade  | <b>I.F.</b>            |
| Cut Grade      | <b>EXCELLENT</b>       |
| Polish         | <b>EXCELLENT</b>       |
| Symmetry       | <b>EXCELLENT</b>       |
| Fluorescence   | <b>NONE</b>            |
| Inscription(s) | <b>IGI LG799605138</b> |

**LABORATORY GROWN DIAMOND REPORT**

May 7, 2026  
IGI Report Number **LG799605138**  
Description **LABORATORY GROWN DIAMOND**  
Shape and Cutting Style **OVAL BRILLIANT**  
Measurements **7.83 X 5.31 X 3.29 MM**

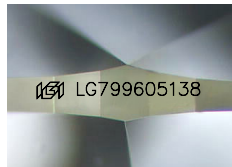
**GRADING RESULTS**

Carat Weight **0.85 CARAT**  
Color Grade **D**  
Clarity Grade **INTERNALLY FLAWLESS**  
Cut Grade **EXCELLENT**

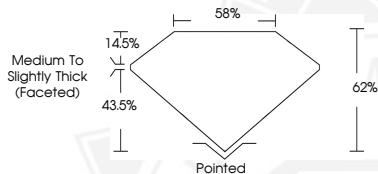
**ADDITIONAL GRADING INFORMATION**

Polish **EXCELLENT**  
Symmetry **EXCELLENT**  
Fluorescence **NONE**  
Inscription(s) **IGI LG799605138**

Comments: As Grown - No indication of post-growth treatment. This Laboratory Grown Diamond was created by High Pressure High Temperature (HPHT) growth process. Type II



Sample Image Used



May 7, 2026

IGI Report Number **LG799605138**

**OVAL BRILLIANT  
LABORATORY GROWN DIAMOND  
7.83 X 5.31 X 3.29 MM**

|                |                        |
|----------------|------------------------|
| Carat Weight   | <b>0.85 CARAT</b>      |
| Color Grade    | <b>D</b>               |
| Clarity Grade  | <b>I.F.</b>            |
| Cut Grade      | <b>EXCELLENT</b>       |
| Polish         | <b>EXCELLENT</b>       |
| Symmetry       | <b>EXCELLENT</b>       |
| Fluorescence   | <b>NONE</b>            |
| Inscription(s) | <b>IGI LG799605138</b> |

Comments: As Grown - No indication of post-growth treatment. This Laboratory Grown Diamond was created by High Pressure High Temperature (HPHT) growth process. Type II

THIS DOCUMENT WAS PRODUCED WITH THE FOLLOWING SECURITY MEASURES: SPECIAL DOCUMENT PAPER, INK SCREENS, WATERMARK, BACKGROUND DESIGNS, HOLOGRAM AND OTHER SECURITY FEATURES NOT LISTED AND DO EXCEED DOCUMENT SECURITY INDUSTRY GUIDELINES.

For terms & conditions and to verify this report, please visit [www.igi.org](http://www.igi.org)