



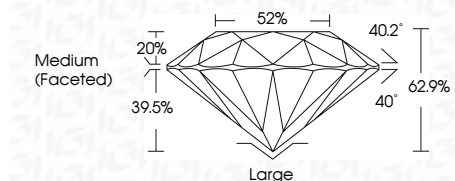
ELECTRONIC COPY

LG799604952
Report verification at igi.org



May 5, 2026
IGI Report Number **LG799604952**
Description **LABORATORY GROWN DIAMOND**
Shape and Cutting Style **OLD EUROPEAN CUT**
Measurements **7.16 - 7.19 X 4.51 MM**

GRADING RESULTS
Carat Weight **1.51 CARAT**
Color Grade **E**
Clarity Grade **VS 1**



ADDITIONAL GRADING INFORMATION
Polish **EXCELLENT**
Symmetry **EXCELLENT**
Fluorescence **NONE**
Inscription(s) **IGI LG799604952**
Comments: This Laboratory Grown Diamond was created by Chemical Vapor Deposition (CVD) growth process. Type IIa



May 5, 2026
IGI Report No **LG799604952**
OLD EUROPEAN CUT
Carat Weight **1.51 CARAT**
Color Grade **E**
Clarity Grade **VS 1**
Depth **62.9%**
Table **52%**
Girdle **Medium (Faceted)**
Culet **Large**
Polish **EXCELLENT**
Symmetry **EXCELLENT**
Fluorescence **NONE**
Inscription(s) **IGI LG799604952**
Comments: This Laboratory Grown Diamond was created by Chemical Vapor Deposition (CVD) growth process. Type IIa

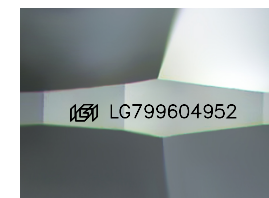
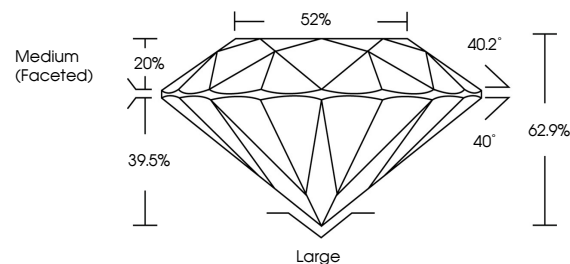
May 5, 2026
IGI Report Number **LG799604952**
Description **LABORATORY GROWN DIAMOND**
Shape and Cutting Style **OLD EUROPEAN CUT**
Measurements **7.16 - 7.19 X 4.51 MM**

GRADING RESULTS
Carat Weight **1.51 CARAT**
Color Grade **E**
Clarity Grade **VS 1**

ADDITIONAL GRADING INFORMATION
Polish **EXCELLENT**
Symmetry **EXCELLENT**
Fluorescence **NONE**
Inscription(s) **IGI LG799604952**

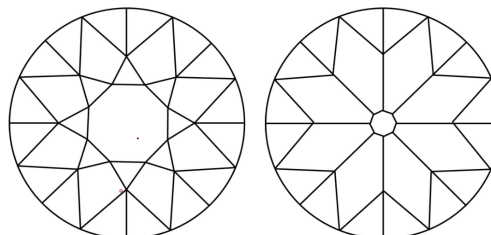
Comments: This Laboratory Grown Diamond was created by Chemical Vapor Deposition (CVD) growth process. Type IIa

PROPORTIONS



Sample Image Used

CLARITY CHARACTERISTICS



KEY TO SYMBOLS

Red symbols indicate internal characteristics.
Green symbols indicate external characteristics.

COLOR

D E F G H I J Faint Very Light Light

CLARITY

FL	IF	VS ¹⁻²	VS ¹⁻²	SI ¹⁻²	I ¹⁻³
Flawless	Internally Flawless	Very Very Slightly Included	Very Slightly Included	Slightly Included	Included

