



ELECTRONIC COPY

LG798621518 Report verification at igi.org



May 8, 2026 IGI Report Number LG798621518 Description LABORATORY GROWN DIAMOND Shape and Cutting Style CUSHION MODIFIED BRILLIANT Measurements 8.76 X 6.86 X 4.68 MM GRADING RESULTS Carat Weight 2.26 CARATS Color Grade E Clarity Grade VS 1

May 8, 2026 IGI Report Number LG798621518 Description LABORATORY GROWN DIAMOND Shape and Cutting Style CUSHION MODIFIED BRILLIANT Measurements 8.76 X 6.86 X 4.68 MM

GRADING RESULTS

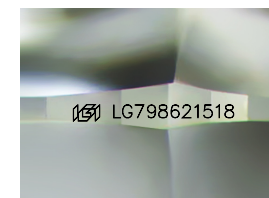
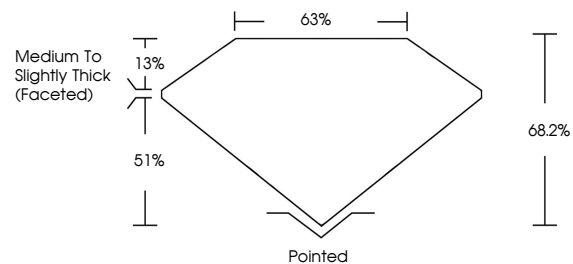
Carat Weight 2.26 CARATS Color Grade E Clarity Grade VS 1

ADDITIONAL GRADING INFORMATION

Polish EXCELLENT Symmetry EXCELLENT Fluorescence NONE Inscription(s) LG798621518

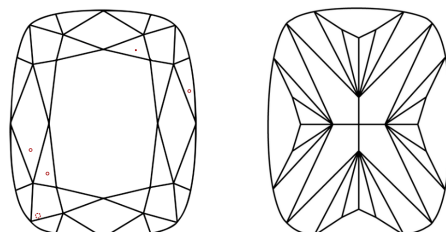
Comments: This Laboratory Grown Diamond was created by Chemical Vapor Deposition (CVD) growth process. Type IIa

PROPORTIONS



Sample Image Used

CLARITY CHARACTERISTICS



KEY TO SYMBOLS

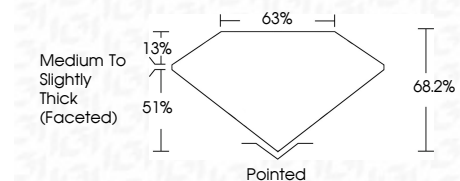
Red symbols indicate internal characteristics. Green symbols indicate external characteristics.

COLOR

D E F G H I J Faint Very Light Light

CLARITY

FL IF VS 1-2 VS 2-3 SI 1-2 I 1-3 Flawless Internally Flawless Very Very Slightly Included Very Slightly Included Slightly Included Included



ADDITIONAL GRADING INFORMATION

Polish EXCELLENT Symmetry EXCELLENT Fluorescence NONE Inscription(s) LG798621518 Comments: This Laboratory Grown Diamond was created by Chemical Vapor Deposition (CVD) growth process. Type IIa



May 8, 2026 IGI Report No LG798621518 CUSHION MODIFIED BRILLIANT 8.76 X 6.86 X 4.68 MM 2.26 CARATS E VS 1 68.2% 63% Medium to Slightly Thick (Faceted) Pointed EXCELLENT EXCELLENT NONE NONE LG798621518 Comments: This Laboratory Grown Diamond was created by Chemical Vapor Deposition (CVD) growth process. Type IIa