



ELECTRONIC COPY

LABORATORY GROWN DIAMOND REPORT

May 19, 2026 IGI Report Number LG798619629 Description LABORATORY GROWN DIAMOND Shape and Cutting Style HEXAGONAL MODIFIED BRILLIANT Measurements 23.47 X 12.09 X 7.61 MM

GRADING RESULTS

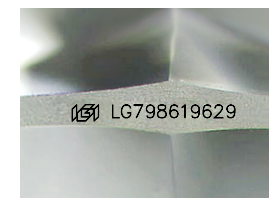
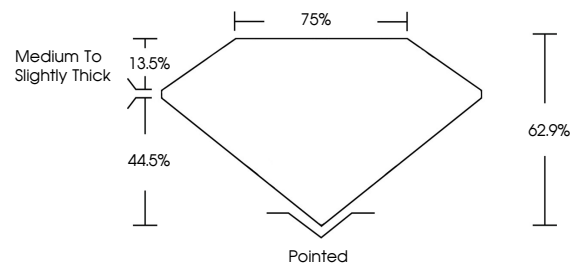
Carat Weight 15.07 CARATS Color Grade F Clarity Grade VVS 2

ADDITIONAL GRADING INFORMATION

Polish EXCELLENT Symmetry EXCELLENT Fluorescence NONE Inscription(s) LG798619629

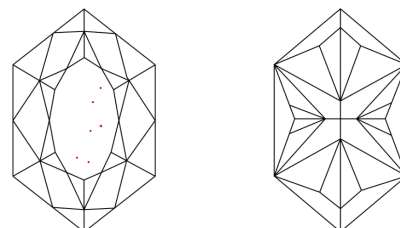
Comments: This Laboratory Grown Diamond was created by Chemical Vapor Deposition (CVD) growth process. Type IIa

PROPORTIONS



Sample Image Used

CLARITY CHARACTERISTICS



KEY TO SYMBOLS

Red symbols indicate internal characteristics. Green symbols indicate external characteristics.

COLOR

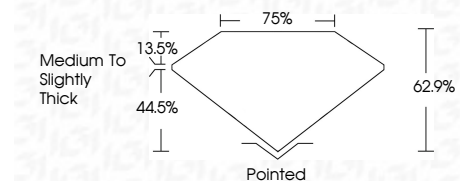
D E F G H I J Faint Very Light Light

CLARITY

Table with columns for clarity grades: FL, IF, VS 1-2, VS 1-2, SI 1-2, I 1-3. Corresponding descriptions: Flawless, Internally Flawless, Very Very Slightly Included, Very Slightly Included, Slightly Included, Included.



May 19, 2026 IGI Report Number LG798619629 Description LABORATORY GROWN DIAMOND Shape and Cutting Style HEXAGONAL MODIFIED BRILLIANT Measurements 23.47 X 12.09 X 7.61 MM GRADING RESULTS Carat Weight 15.07 CARATS Color Grade F Clarity Grade VVS 2



ADDITIONAL GRADING INFORMATION

Polish EXCELLENT Symmetry EXCELLENT Fluorescence NONE Inscription(s) LG798619629 Comments: This Laboratory Grown Diamond was created by Chemical Vapor Deposition (CVD) growth process. Type IIa



May 19, 2026 IGI Report No. LG798619629 HEXAGONAL MODIFIED BRILLIANT 15.07 CARATS F VVS 2 23.47 X 12.09 X 7.61 MM Medium to Slightly Thick Pointed EXCELLENT EXCELLENT NONE LG798619629 Comments: This Laboratory Grown Diamond was created by Chemical Vapor Deposition (CVD) growth process. Type IIa