



ELECTRONIC COPY

LG798618931
Report verification at igi.org



May 18, 2026
IGI Report Number **LG798618931**
Description **LABORATORY GROWN DIAMOND**
Shape and Cutting Style **HEXAGONAL MODIFIED BRILLIANT**
Measurements **9.49 X 4.80 X 3.04 MM**
GRADING RESULTS
Carat Weight **1.03 CARAT**
Color Grade **D**
Clarity Grade **VVS 2**

LABORATORY GROWN DIAMOND REPORT

May 18, 2026
IGI Report Number **LG798618931**
Description **LABORATORY GROWN DIAMOND**
Shape and Cutting Style **HEXAGONAL MODIFIED BRILLIANT**
Measurements **9.49 X 4.80 X 3.04 MM**

GRADING RESULTS

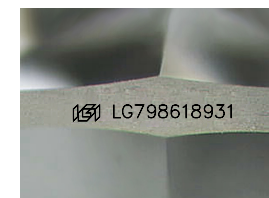
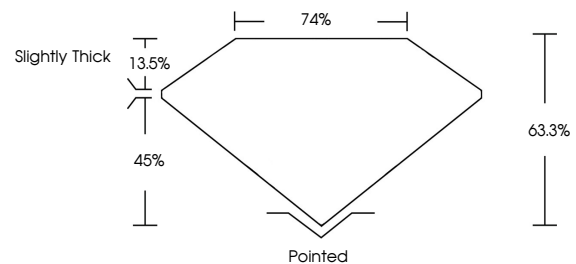
Carat Weight **1.03 CARAT**
Color Grade **D**
Clarity Grade **VVS 2**

ADDITIONAL GRADING INFORMATION

Polish **EXCELLENT**
Symmetry **EXCELLENT**
Fluorescence **NONE**
Inscription(s) **IGI LG798618931**

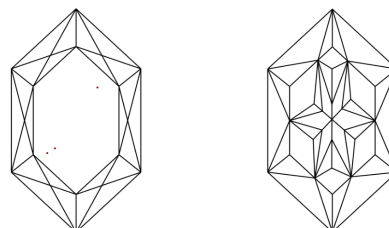
Comments: This Laboratory Grown Diamond was created by Chemical Vapor Deposition (CVD) growth process.
Type IIa

PROPORTIONS



Sample Image Used

CLARITY CHARACTERISTICS



KEY TO SYMBOLS

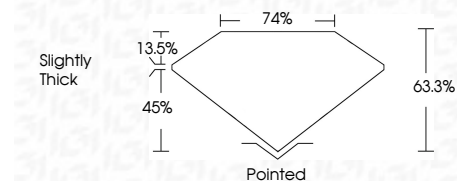
Red symbols indicate internal characteristics.
Green symbols indicate external characteristics.

COLOR

D E F G H I J Faint Very Light Light

CLARITY

| FL | IF | VVS ¹⁻² | VS ¹⁻² | SI ¹⁻² | I ¹⁻³ |
|----------|---------------------|-----------------------------|------------------------|-------------------|------------------|
| Flawless | Internally Flawless | Very Very Slightly Included | Very Slightly Included | Slightly Included | Included |



ADDITIONAL GRADING INFORMATION

Polish **EXCELLENT**
Symmetry **EXCELLENT**
Fluorescence **NONE**
Inscription(s) **IGI LG798618931**
Comments: This Laboratory Grown Diamond was created by Chemical Vapor Deposition (CVD) growth process.
Type IIa



May 18, 2026
IGI Report No LG798618931
HEXAGONAL MODIFIED BRILLIANT
9.49 X 4.80 X 3.04 MM
1.03 CARAT
D
VVS 2
63.3%
74%
Slightly Thick
Pointed
EXCELLENT
EXCELLENT
NONE
IGI LG798618931
Comments: This Laboratory Grown Diamond was created by Chemical Vapor Deposition (CVD) growth process.
Type IIa