



ELECTRONIC COPY

LG798618505
Report verification at igi.org



May 8, 2026

IGI Report Number **LG798618505**

Description **LABORATORY GROWN DIAMOND**

Shape and Cutting Style **OVAL MODIFIED BRILLIANT**

Measurements **18.21 X 11.08 X 6.70 MM**

GRADING RESULTS

Carat Weight **10.02 CARATS**

Color Grade **FANCY VIVID BLUE**

Clarity Grade **VS 1**

May 8, 2026

IGI Report Number **LG798618505**

Description **LABORATORY GROWN DIAMOND**

Shape and Cutting Style **OVAL MODIFIED BRILLIANT**

Measurements **18.21 X 11.08 X 6.70 MM**

GRADING RESULTS

Carat Weight **10.02 CARATS**

Color Grade **FANCY VIVID BLUE**

Clarity Grade **VS 1**

ADDITIONAL GRADING INFORMATION

Polish **EXCELLENT**

Symmetry **EXCELLENT**

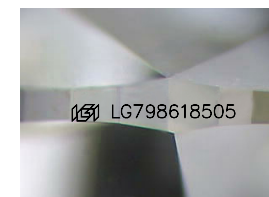
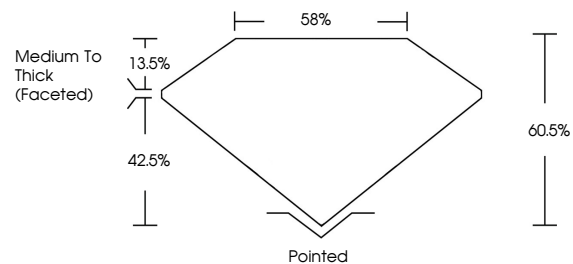
Fluorescence **NONE**

Inscription(s) **IGI LG798618505**

Comments: This Laboratory Grown Diamond was created by Chemical Vapor Deposition (CVD) growth process.

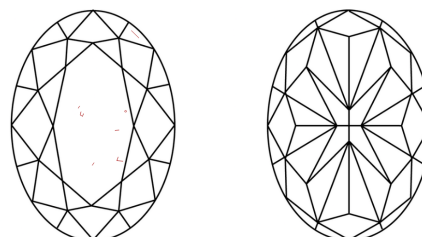
Indications of post-growth treatment.

PROPORTIONS



Sample Image Used

CLARITY CHARACTERISTICS



KEY TO SYMBOLS

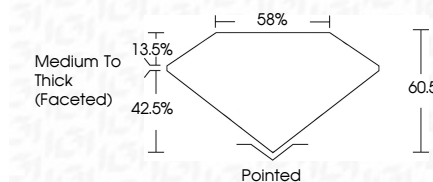
Red symbols indicate internal characteristics.
Green symbols indicate external characteristics.

COLOR

D E F G H I J Faint Very Light Light

CLARITY

FL	IF	VS ¹⁻²	VS ¹⁻²	SI ¹⁻²	I ¹⁻³
Flawless	Internally Flawless	Very Very Slightly Included	Very Slightly Included	Slightly Included	Included



ADDITIONAL GRADING INFORMATION

Polish **EXCELLENT**

Symmetry **EXCELLENT**

Fluorescence **NONE**

Inscription(s) **IGI LG798618505**

Comments: This Laboratory Grown Diamond was created by Chemical Vapor Deposition (CVD) growth process. Indications of post-growth treatment.



IGI



May 8, 2026
IGI Report No LG798618505
OVAL MODIFIED BRILLIANT

10.02 CARATS
Carat Weight
FANCY VIVID BLUE
Color Grade

VS 1
Clarity Grade
60.5%
Depth
85%
Table
Medium To Thick (Faceted)
Girdle

Pointed
Culet
EXCELLENT
Polish
EXCELLENT
Symmetry
NONE
Fluorescence
IGI LG798618505
Inscription(s)

Comments: This Laboratory Grown Diamond was created by Chemical Vapor Deposition (CVD) growth process. Indications of post-growth treatment.