



May 9, 2026

IGI Report Number LG798617703
ROUND BRILLIANT
LABORATORY GROWN DIAMOND
6.33 - 6.36 X 3.91 MM

Carat Weight 0.97 CARAT
Color Grade E
Clarity Grade VS 1
Cut Grade IDEAL
Polish EXCELLENT
Symmetry EXCELLENT
Fluorescence NONE
Inscription(s) IGI LG798617703

Comments: This Laboratory Grown Diamond was created by Chemical Vapor Deposition (CVD) growth process. Type IIa

LABORATORY GROWN DIAMOND REPORT

May 9, 2026
IGI Report Number **LG798617703**
Description **LABORATORY GROWN DIAMOND**
Shape and Cutting Style **ROUND BRILLIANT**
Measurements **6.33 - 6.36 X 3.91 MM**

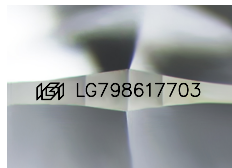
GRADING RESULTS

Carat Weight 0.97 CARAT
Color Grade E
Clarity Grade VS 1
Cut Grade IDEAL

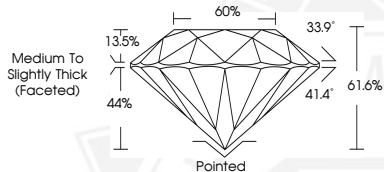
ADDITIONAL GRADING INFORMATION

Polish EXCELLENT
Symmetry EXCELLENT
Fluorescence NONE
Inscription(s) IGI LG798617703

Comments: This Laboratory Grown Diamond was created by Chemical Vapor Deposition (CVD) growth process. Type IIa



Sample Image Used



May 9, 2026

IGI Report Number LG798617703
ROUND BRILLIANT
LABORATORY GROWN DIAMOND
6.33 - 6.36 X 3.91 MM

Carat Weight 0.97 CARAT
Color Grade E
Clarity Grade VS 1
Cut Grade IDEAL
Polish EXCELLENT
Symmetry EXCELLENT
Fluorescence NONE
Inscription(s) IGI LG798617703

Comments: This Laboratory Grown Diamond was created by Chemical Vapor Deposition (CVD) growth process. Type IIa



THIS DOCUMENT WAS PRODUCED WITH THE FOLLOWING SECURITY MEASURES: SPECIAL DOCUMENT PAPER, INK SCREENS, WATERMARK, BACKGROUND DESIGNS, HOLOGRAM AND OTHER SECURITY FEATURES NOT LISTED AND DO EXCEED DOCUMENT SECURITY INDUSTRY GUIDELINES.