



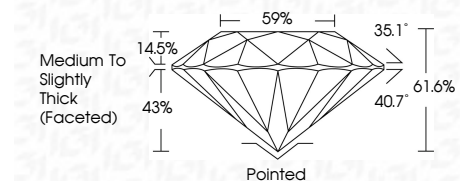
ELECTRONIC COPY

LG798617036 Report verification at igi.org



May 4, 2026 IGI Report Number LG798617036 Description LABORATORY GROWN DIAMOND Shape and Cutting Style ROUND BRILLIANT Measurements 6.36 - 6.39 X 3.93 MM

GRADING RESULTS Carat Weight 1.00 CARAT Color Grade E Clarity Grade VS 1 Cut Grade IDEAL



ADDITIONAL GRADING INFORMATION Polish EXCELLENT Symmetry EXCELLENT Fluorescence NONE Inscription(s) LG798617036 Comments: HEARTS & ARROWS As Grown - No indication of post-growth treatment. This Laboratory Grown Diamond was created by High Pressure High Temperature (HPHT) growth process. Type II



May 4, 2026 IGI Report No LG798617036 ROUND BRILLIANT 6.36 - 6.39 X 3.93 MM 1.00 CARAT E VS 1 IDEAL 61.6% 59% Medium To Slightly Thick (Faceted) Pointed EXCELLENT EXCELLENT NONE LG798617036

Comments: HEARTS & ARROWS As Grown - No indication of post-growth treatment. This Laboratory Grown Diamond was created by High Pressure High Temperature (HPHT) growth process. Type II

LABORATORY GROWN DIAMOND REPORT

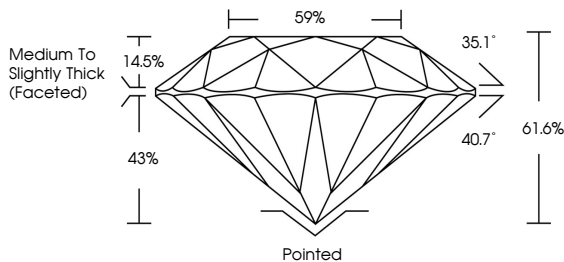
May 4, 2026 IGI Report Number LG798617036 Description LABORATORY GROWN DIAMOND Shape and Cutting Style ROUND BRILLIANT Measurements 6.36 - 6.39 X 3.93 MM

GRADING RESULTS Carat Weight 1.00 CARAT Color Grade E Clarity Grade VS 1 Cut Grade IDEAL

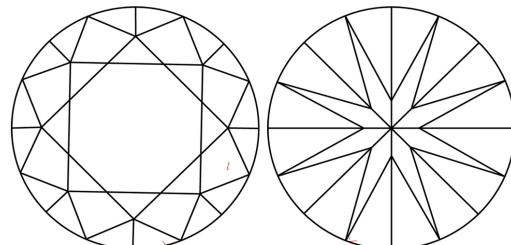
ADDITIONAL GRADING INFORMATION Polish EXCELLENT Symmetry EXCELLENT Fluorescence NONE Inscription(s) LG798617036

Comments: HEARTS & ARROWS As Grown - No indication of post-growth treatment. This Laboratory Grown Diamond was created by High Pressure High Temperature (HPHT) growth process. Type II

PROPORTIONS



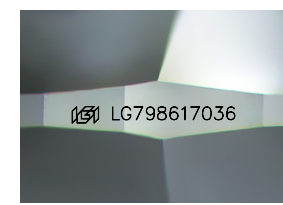
CLARITY CHARACTERISTICS



KEY TO SYMBOLS Red symbols indicate internal characteristics. Green symbols indicate external characteristics.



www.igi.org



Sample Image Used

Color scale table with categories D, E, F, G, H, I, J, Faint, Very Light, Light.

Clarity scale table with categories FL, IF, VS 1-2, VS 1-2, SI 1-2, I 1-3.

