



**ELECTRONIC COPY**

LG798615626  
Report verification at igi.org



May 11, 2026

IGI Report Number **LG798615626**

Description **LABORATORY GROWN DIAMOND**

Shape and Cutting Style **ROUND BRILLIANT**

Measurements **6.45 - 6.49 X 3.85 MM**

**GRADING RESULTS**

Carat Weight **1.00 CARAT**

Color Grade **D**

Clarity Grade **SI 1**

Cut Grade **EXCELLENT**

May 11, 2026

IGI Report Number **LG798615626**

Description **LABORATORY GROWN DIAMOND**

Shape and Cutting Style **ROUND BRILLIANT**

Measurements **6.45 - 6.49 X 3.85 MM**

**GRADING RESULTS**

Carat Weight **1.00 CARAT**

Color Grade **D**

Clarity Grade **SI 1**

Cut Grade **EXCELLENT**

**ADDITIONAL GRADING INFORMATION**

Polish **EXCELLENT**

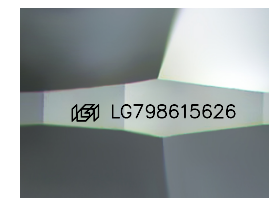
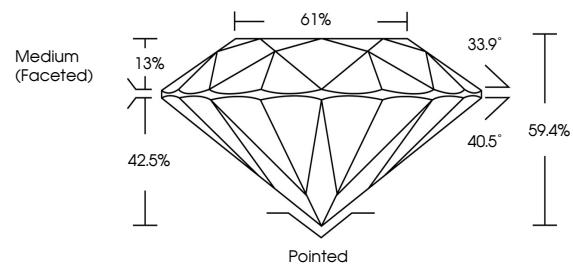
Symmetry **EXCELLENT**

Fluorescence **NONE**

Inscription(s) **IGI LG798615626**

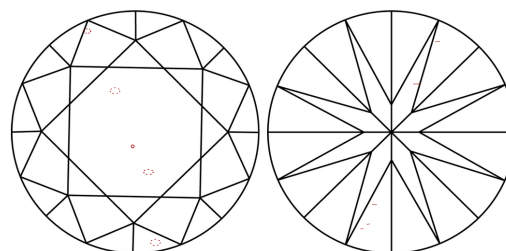
Comments: This Laboratory Grown Diamond was created by Chemical Vapor Deposition (CVD) growth process.  
Type IIa

**PROPORTIONS**



Sample Image Used

**CLARITY CHARACTERISTICS**



**KEY TO SYMBOLS**

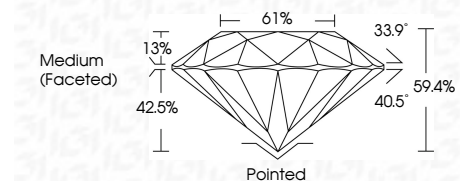
Red symbols indicate internal characteristics.  
Green symbols indicate external characteristics.

**COLOR**

D E F G H I J Faint Very Light Light

**CLARITY**

FL	IF	VS <sup>1-2</sup>	VS <sup>1-2</sup>	SI <sup>1-2</sup>	I <sup>1-3</sup>
Flawless	Internally Flawless	Very Very Slightly Included	Very Slightly Included	Slightly Included	Included



**ADDITIONAL GRADING INFORMATION**

Polish **EXCELLENT**

Symmetry **EXCELLENT**

Fluorescence **NONE**

Inscription(s) **IGI LG798615626**

Comments: This Laboratory Grown Diamond was created by Chemical Vapor Deposition (CVD) growth process.  
Type IIa



**IGI**



May 11, 2026  
IGI Report No LG798615626  
ROUND BRILLIANT

1.00 CARAT  
Carat Weight  
Color Grade D  
Clarity Grade SI 1  
Depth 61.4%  
Table 61%  
Medium (Faceted)  
Cutler Pointed  
Polish EXCELLENT  
Symmetry EXCELLENT  
Fluorescence NONE  
Inscriptions(s) IGI LG798615626

Comments: This Laboratory Grown Diamond was created by Chemical Vapor Deposition (CVD) growth process.  
Type IIa