



**ELECTRONIC COPY**

LG798615557  
Report verification at igi.org



May 12, 2026  
IGI Report Number **LG798615557**  
Description **LABORATORY GROWN DIAMOND**  
Shape and Cutting Style **CUSHION MODIFIED BRILLIANT**  
Measurements **10.37 X 6.92 X 4.44 MM**  
**GRADING RESULTS**  
Carat Weight **2.50 CARATS**  
Color Grade **F**  
Clarity Grade **VVS 2**

**LABORATORY GROWN DIAMOND REPORT**

May 12, 2026  
IGI Report Number **LG798615557**  
Description **LABORATORY GROWN DIAMOND**  
Shape and Cutting Style **CUSHION MODIFIED BRILLIANT**  
Measurements **10.37 X 6.92 X 4.44 MM**

**GRADING RESULTS**

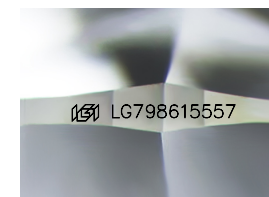
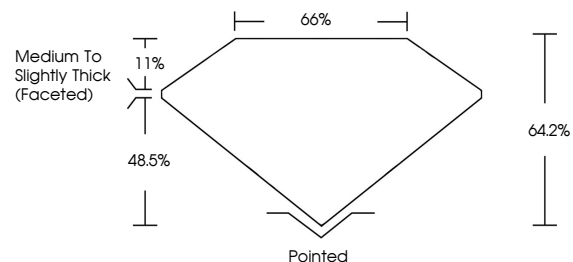
Carat Weight **2.50 CARATS**  
Color Grade **F**  
Clarity Grade **VVS 2**

**ADDITIONAL GRADING INFORMATION**

Polish **EXCELLENT**  
Symmetry **EXCELLENT**  
Fluorescence **NONE**  
Inscription(s) **IGI LG798615557**

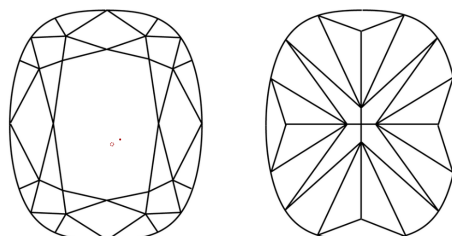
Comments: This Laboratory Grown Diamond was created by Chemical Vapor Deposition (CVD) growth process.  
Type IIa

**PROPORTIONS**



Sample Image Used

**CLARITY CHARACTERISTICS**



**KEY TO SYMBOLS**

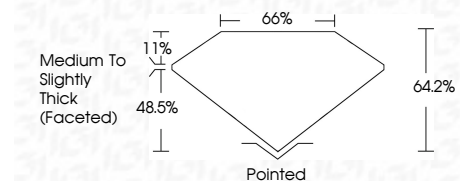
Red symbols indicate internal characteristics.  
Green symbols indicate external characteristics.

**COLOR**

D E F G H I J Faint Very Light Light

**CLARITY**

FL	IF	VVS <sup>1-2</sup>	VS <sup>1-2</sup>	SI <sup>1-2</sup>	I <sup>1-3</sup>
Flawless	Internally Flawless	Very Very Slightly Included	Very Slightly Included	Slightly Included	Included



**ADDITIONAL GRADING INFORMATION**

Polish **EXCELLENT**  
Symmetry **EXCELLENT**  
Fluorescence **NONE**  
Inscription(s) **IGI LG798615557**  
Comments: This Laboratory Grown Diamond was created by Chemical Vapor Deposition (CVD) growth process.  
Type IIa



May 12, 2026  
IGI Report No LG798615557  
**CUSHION MODIFIED BRILLIANT**  
10.37 X 6.92 X 4.44 MM  
2.50 CARATS  
F  
VVS 2  
64.2%  
48.5%  
Medium to Slightly Thick (Faceted)  
Pointed  
EXCELLENT  
EXCELLENT  
NONE  
IGI LG798615557

Comments: This Laboratory Grown Diamond was created by Chemical Vapor Deposition (CVD) growth process.  
Type IIa