



LABORATORY GROWN DIAMOND REPORT

May 6, 2026
 IGI Report Number **LG798614848**
 Description **LABORATORY GROWN DIAMOND**
 Shape and Cutting Style **OVAL BRILLIANT**
 Measurements **7.53 X 5.04 X 3.15 MM**

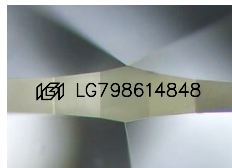
GRADING RESULTS

Carat Weight **0.74 CARAT**
 Color Grade **D**
 Clarity Grade **VVS 1**

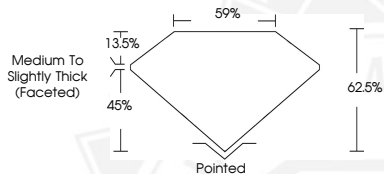
ADDITIONAL GRADING INFORMATION

Polish **VERY GOOD**
 Symmetry **EXCELLENT**
 Fluorescence **NONE**
 Inscription(s) **IGI LG798614848**

Comments: As Grown - No indication of post-growth treatment. This Laboratory Grown Diamond was created by High Pressure High Temperature (HPHT) growth process. Type II



Sample Image Used



May 6, 2026
 IGI Report Number **LG798614848**
OVAL BRILLIANT
LABORATORY GROWN DIAMOND
7.53 X 5.04 X 3.15 MM
 Carat Weight **0.74 CARAT**
 Color Grade **D**
 Clarity Grade **VVS 1**
 Polish **VERY GOOD**
 Symmetry **EXCELLENT**
 Fluorescence **NONE**
 Inscription(s) **IGI LG798614848**

Comments: As Grown - No indication of post-growth treatment. This Laboratory Grown Diamond was created by High Pressure High Temperature (HPHT) growth process. Type II



May 6, 2026
 IGI Report Number **LG798614848**
OVAL BRILLIANT
LABORATORY GROWN DIAMOND
7.53 X 5.04 X 3.15 MM
 Carat Weight **0.74 CARAT**
 Color Grade **D**
 Clarity Grade **VVS 1**
 Polish **VERY GOOD**
 Symmetry **EXCELLENT**
 Fluorescence **NONE**
 Inscription(s) **IGI LG798614848**

Comments: As Grown - No indication of post-growth treatment. This Laboratory Grown Diamond was created by High Pressure High Temperature (HPHT) growth process. Type II



THIS DOCUMENT WAS PRODUCED WITH THE FOLLOWING SECURITY MEASURES: SPECIAL DOCUMENT PAPER, INK SCREENS, WATERMARK, BACKGROUND DESIGNS, HOLOGRAM AND OTHER SECURITY FEATURES NOT LISTED AND DO EXCEED DOCUMENT SECURITY INDUSTRY GUIDELINES.