



LABORATORY GROWN DIAMOND REPORT

May 9, 2026
 IGI Report Number **LG798613110**
 Description **LABORATORY GROWN DIAMOND**
 Shape and Cutting Style **PEAR BRILLIANT**
 Measurements **8.58 X 5.40 X 3.53 MM**

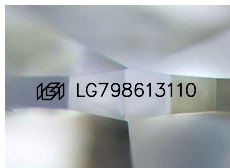
GRADING RESULTS

Carat Weight **0.99 CARAT**
 Color Grade **E**
 Clarity Grade **VVS 2**

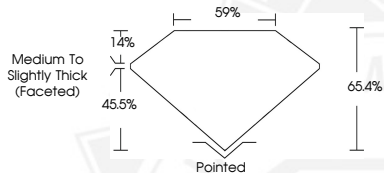
ADDITIONAL GRADING INFORMATION

Polish **EXCELLENT**
 Symmetry **EXCELLENT**
 Fluorescence **NONE**
 Inscription(s) **IGI LG798613110**

Comments: This Laboratory Grown Diamond was created by Chemical Vapor Deposition (CVD) growth process. Type IIa



Sample Image Used



May 9, 2026
 IGI Report Number **LG798613110**
PEAR BRILLIANT
LABORATORY GROWN DIAMOND
8.58 X 5.40 X 3.53 MM
 Carat Weight **0.99 CARAT**
 Color Grade **E**
 Clarity Grade **VVS 2**
 Polish **EXCELLENT**
 Symmetry **EXCELLENT**
 Fluorescence **NONE**
 Inscription(s) **IGI LG798613110**

Comments: This Laboratory Grown Diamond was created by Chemical Vapor Deposition (CVD) growth process. Type IIa



May 9, 2026
 IGI Report Number **LG798613110**
PEAR BRILLIANT
LABORATORY GROWN DIAMOND
8.58 X 5.40 X 3.53 MM
 Carat Weight **0.99 CARAT**
 Color Grade **E**
 Clarity Grade **VVS 2**
 Polish **EXCELLENT**
 Symmetry **EXCELLENT**
 Fluorescence **NONE**
 Inscription(s) **IGI LG798613110**

Comments: This Laboratory Grown Diamond was created by Chemical Vapor Deposition (CVD) growth process. Type IIa

THIS DOCUMENT WAS PRODUCED WITH THE FOLLOWING SECURITY MEASURES: SPECIAL DOCUMENT PAPER, INK SCREENS, WATERMARK, BACKGROUND DESIGNS, HOLOGRAM AND OTHER SECURITY FEATURES NOT LISTED AND DO EXCEED DOCUMENT SECURITY INDUSTRY GUIDELINES.