



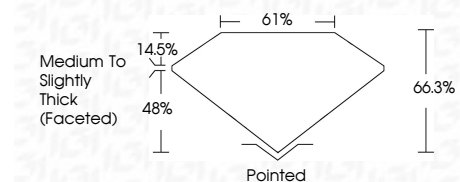
ELECTRONIC COPY

LG798612941
Report verification at igi.org



May 11, 2026
IGI Report Number **LG798612941**
Description **LABORATORY GROWN DIAMOND**
Shape and Cutting Style **SQUARE CUSHION BRILLIANT**
Measurements **7.23 X 6.86 X 4.55 MM**

GRADING RESULTS
Carat Weight **1.60 CARAT**
Color Grade **E**
Clarity Grade **VS 1**



ADDITIONAL GRADING INFORMATION
Polish **EXCELLENT**
Symmetry **EXCELLENT**
Fluorescence **NONE**
Inscription(s) **IGI LG798612941**
Comments: This Laboratory Grown Diamond was created by Chemical Vapor Deposition (CVD) growth process. Type IIa



May 11, 2026
IGI Report No LG798612941
SQUARE CUSHION BRILLIANT
7.23 X 6.86 X 4.55 MM
1.60 CARAT
E
VS 1
66.3%
61%
Medium to Slightly Thick (Faceted)
Pointed
EXCELLENT
EXCELLENT
NONE
IGI LG798612941
Comments: This Laboratory Grown Diamond was created by Chemical Vapor Deposition (CVD) growth process. Type IIa

LABORATORY GROWN DIAMOND REPORT

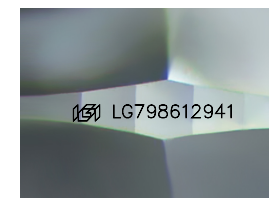
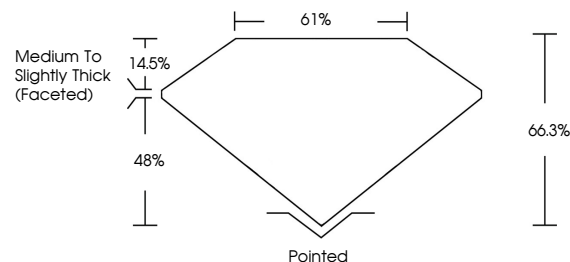
May 11, 2026
IGI Report Number **LG798612941**
Description **LABORATORY GROWN DIAMOND**
Shape and Cutting Style **SQUARE CUSHION BRILLIANT**
Measurements **7.23 X 6.86 X 4.55 MM**

GRADING RESULTS
Carat Weight **1.60 CARAT**
Color Grade **E**
Clarity Grade **VS 1**

ADDITIONAL GRADING INFORMATION
Polish **EXCELLENT**
Symmetry **EXCELLENT**
Fluorescence **NONE**
Inscription(s) **IGI LG798612941**

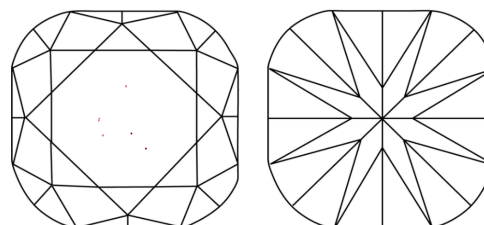
Comments: This Laboratory Grown Diamond was created by Chemical Vapor Deposition (CVD) growth process. Type IIa

PROPORTIONS



Sample Image Used

CLARITY CHARACTERISTICS



KEY TO SYMBOLS

Red symbols indicate internal characteristics.
Green symbols indicate external characteristics.

COLOR

D E F G H I J Faint Very Light Light

CLARITY

FL	IF	VS ¹⁻²	VS ¹⁻²	SI ¹⁻²	I ¹⁻³
Flawless	Internally Flawless	Very Very Slightly Included	Very Slightly Included	Slightly Included	Included

