



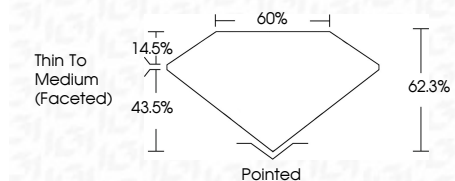
ELECTRONIC COPY

LG798612910 Report verification at igi.org



May 5, 2026 IGI Report Number LG798612910 Description LABORATORY GROWN DIAMOND Shape and Cutting Style MARQUISE BRILLIANT Measurements 12.78 X 6.73 X 4.19 MM

GRADING RESULTS Carat Weight 2.08 CARATS Color Grade E Clarity Grade VVS 2



ADDITIONAL GRADING INFORMATION Polish EXCELLENT Symmetry EXCELLENT Fluorescence NONE Inscription(s) IGI LG798612910 Comments: This Laboratory Grown Diamond was created by Chemical Vapor Deposition (CVD) growth process. Type IIa



May 5, 2026 IGI Report No LG798612910 MARQUISE BRILLIANT 2.08 CARATS E VVS 2 62.3% 60% Thin To Medium (Faceted) Pointed EXCELLENT EXCELLENT NONE IGI LG798612910 Comments: This Laboratory Grown Diamond was created by Chemical Vapor Deposition (CVD) growth process. Type IIa

LABORATORY GROWN DIAMOND REPORT

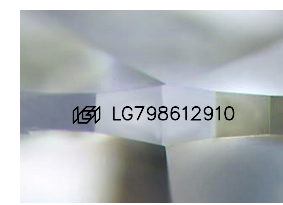
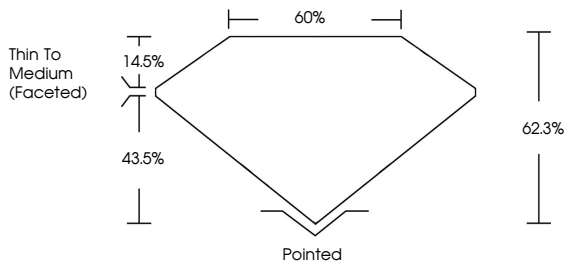
May 5, 2026 IGI Report Number LG798612910 Description LABORATORY GROWN DIAMOND Shape and Cutting Style MARQUISE BRILLIANT Measurements 12.78 X 6.73 X 4.19 MM

GRADING RESULTS Carat Weight 2.08 CARATS Color Grade E Clarity Grade VVS 2

ADDITIONAL GRADING INFORMATION Polish EXCELLENT Symmetry EXCELLENT Fluorescence NONE Inscription(s) IGI LG798612910

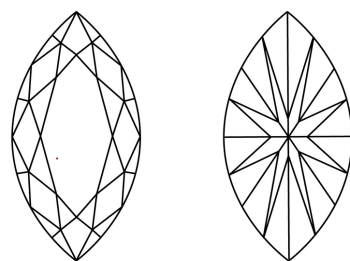
Comments: This Laboratory Grown Diamond was created by Chemical Vapor Deposition (CVD) growth process. Type IIa

PROPORTIONS



Sample Image Used

CLARITY CHARACTERISTICS



KEY TO SYMBOLS Red symbols indicate internal characteristics. Green symbols indicate external characteristics.

Table with columns D, E, F, G, H, I, J, Faint, Very Light, Light

Table with columns FL, IF, VS 1-2, VS 1-2, SI 1-2, I 1-3 and corresponding descriptions: Flawless, Internally Flawless, Very Very Slightly Included, Very Slightly Included, Slightly Included, Included

