



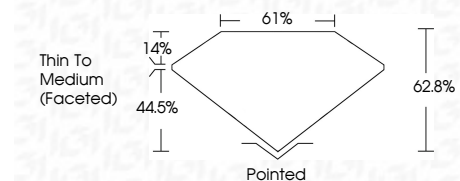
ELECTRONIC COPY

LG798612850 Report verification at igi.org



May 4, 2026 IGI Report Number LG798612850 Description LABORATORY GROWN DIAMOND Shape and Cutting Style MARQUISE BRILLIANT Measurements 11.38 X 6.21 X 3.90 MM

GRADING RESULTS Carat Weight 1.58 CARAT Color Grade D Clarity Grade VVS 2



ADDITIONAL GRADING INFORMATION Polish EXCELLENT Symmetry EXCELLENT Fluorescence NONE Inscription(s) IGI LG798612850 Comments: This Laboratory Grown Diamond was created by Chemical Vapor Deposition (CVD) growth process. Type IIa



May 4, 2026 IGI Report No LG798612850 MARQUISE BRILLIANT 11.38 X 6.21 X 3.90 MM 1.58 CARAT D VS 2 62.8% 61% Thin To Medium (Faceted) Pointed EXCELLENT EXCELLENT NONE IGI LG798612850 Comments: This Laboratory Grown Diamond was created by Chemical Vapor Deposition (CVD) growth process. Type IIa

LABORATORY GROWN DIAMOND REPORT

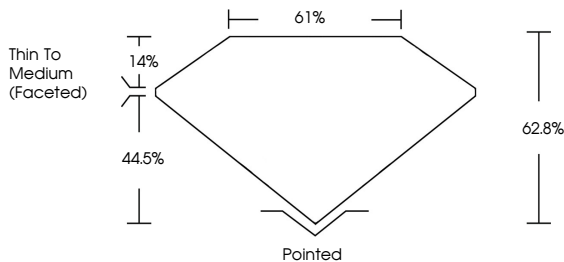
May 4, 2026 IGI Report Number LG798612850 Description LABORATORY GROWN DIAMOND Shape and Cutting Style MARQUISE BRILLIANT Measurements 11.38 X 6.21 X 3.90 MM

GRADING RESULTS Carat Weight 1.58 CARAT Color Grade D Clarity Grade VVS 2

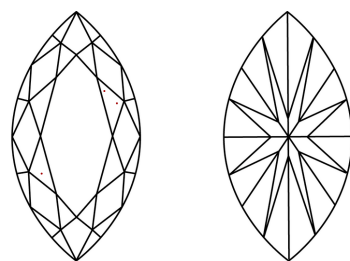
ADDITIONAL GRADING INFORMATION Polish EXCELLENT Symmetry EXCELLENT Fluorescence NONE Inscription(s) IGI LG798612850

Comments: This Laboratory Grown Diamond was created by Chemical Vapor Deposition (CVD) growth process. Type IIa

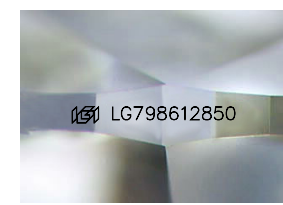
PROPORTIONS



CLARITY CHARACTERISTICS



KEY TO SYMBOLS Red symbols indicate internal characteristics. Green symbols indicate external characteristics.



Sample Image Used

Table with 10 columns: D, E, F, G, H, I, J, Faint, Very Light, Light

Table with 6 columns: FL, IF, VS 1-2, VS 1-2, SI 1-2, I 1-3



FOR THE SUSTAINABILITY RATED CERTIFICATE, SCAN HERE →