



ELECTRONIC COPY

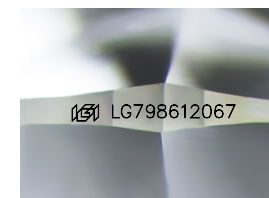
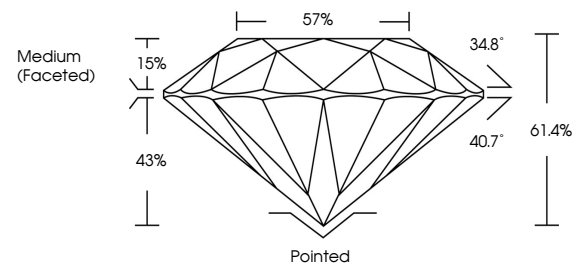
LG798612067
Report verification at igi.org



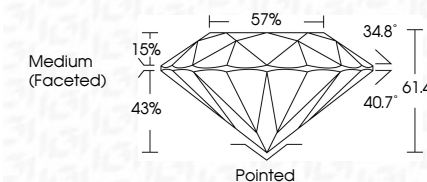
May 7, 2026
IGI Report Number LG798612067
Description LABORATORY GROWN DIAMOND
Shape and Cutting Style ROUND BRILLIANT
Measurements 6.47 - 6.51 X 3.99 MM
GRADING RESULTS
Carat Weight 1.02 CARAT
Color Grade D
Clarity Grade INTERNALLY FLAWLESS
Cut Grade IDEAL

May 7, 2026
IGI Report Number LG798612067
Description LABORATORY GROWN DIAMOND
Shape and Cutting Style ROUND BRILLIANT
Measurements 6.47 - 6.51 X 3.99 MM

PROPORTIONS



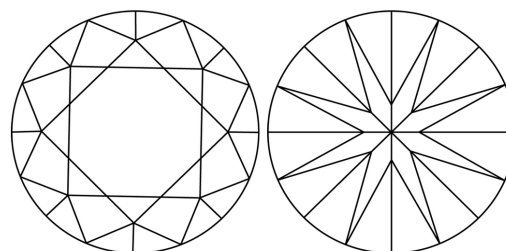
Sample Image Used



GRADING RESULTS

Carat Weight 1.02 CARAT
Color Grade D
Clarity Grade INTERNALLY FLAWLESS
Cut Grade IDEAL

CLARITY CHARACTERISTICS



COLOR

D E F G H I J Faint Very Light Light

CLARITY

FL IF VS 1-2 VS 1-2 SI 1-2 I 1-3
Flawless Internally Flawless Very Very Slightly Slightly Included

ADDITIONAL GRADING INFORMATION

Polish EXCELLENT
Symmetry EXCELLENT
Fluorescence NONE
Inscription(s) IGI LG798612067
Comments: As Grown - No indication of post-growth treatment.
This Laboratory Grown Diamond was created by High Pressure High Temperature (HPHT) growth process. Type II

ADDITIONAL GRADING INFORMATION

Polish EXCELLENT
Symmetry EXCELLENT
Fluorescence NONE
Inscription(s) IGI LG798612067

KEY TO SYMBOLS

Red symbols indicate internal characteristics.
Green symbols indicate external characteristics.



IGI

May 7, 2026
IGI Report No LG798612067
ROUND BRILLIANT
6.47 - 6.51 X 3.99 MM
1.02 CARAT
Color Grade D
Clarity Grade IF
Cut Grade IDEAL
Depth 61.4%
Table 57%
Girdle Medium (Faceted)
Culet Pointed
Polish EXCELLENT
Symmetry EXCELLENT
Fluorescence NONE
Inscription(s) IGI LG798612067
Comments: As Grown - No indication of post-growth treatment.
This Laboratory Grown Diamond was created by High Pressure High Temperature (HPHT) growth process. Type II