



May 5, 2026

IGI Report Number **LG798611986**

**OVAL BRILLIANT**

**LABORATORY GROWN DIAMOND**

**6.61 X 4.62 X 2.81 MM**

Carat Weight **0.53 CARAT**

Color Grade **D**

Clarity Grade **VVS 2**

Polish **EXCELLENT**

Symmetry **EXCELLENT**

Fluorescence **NONE**

Inscription(s) **IGI LG798611986**

Comments: As Grown - No indication of post-growth treatment. This Laboratory Grown Diamond was created by High Pressure High Temperature (HPHT) growth process. Type II

**LABORATORY GROWN DIAMOND REPORT**

May 5, 2026

IGI Report Number **LG798611986**

Description **LABORATORY GROWN DIAMOND**

Shape and Cutting Style **OVAL BRILLIANT**

Measurements **6.61 X 4.62 X 2.81 MM**

**GRADING RESULTS**

Carat Weight **0.53 CARAT**

Color Grade **D**

Clarity Grade **VVS 2**

**ADDITIONAL GRADING INFORMATION**

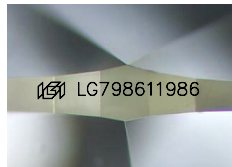
Polish **EXCELLENT**

Symmetry **EXCELLENT**

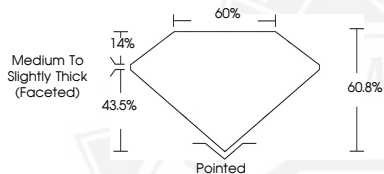
Fluorescence **NONE**

Inscription(s) **IGI LG798611986**

Comments: As Grown - No indication of post-growth treatment. This Laboratory Grown Diamond was created by High Pressure High Temperature (HPHT) growth process. Type II



Sample Image Used



May 5, 2026

IGI Report Number **LG798611986**

**OVAL BRILLIANT**

**LABORATORY GROWN DIAMOND**

**6.61 X 4.62 X 2.81 MM**

Carat Weight **0.53 CARAT**

Color Grade **D**

Clarity Grade **VVS 2**

Polish **EXCELLENT**

Symmetry **EXCELLENT**

Fluorescence **NONE**

Inscription(s) **IGI LG798611986**

Comments: As Grown - No indication of post-growth treatment. This Laboratory Grown Diamond was created by High Pressure High Temperature (HPHT) growth process. Type II



THIS DOCUMENT WAS PRODUCED WITH THE FOLLOWING SECURITY MEASURES: SPECIAL DOCUMENT PAPER, INK SCREENS, WATERMARK, BACKGROUND DESIGNS, HOLOGRAM AND OTHER SECURITY FEATURES NOT LISTED AND DO EXCEED DOCUMENT SECURITY INDUSTRY GUIDELINES.