



ELECTRONIC COPY

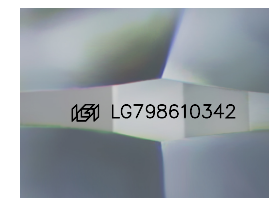
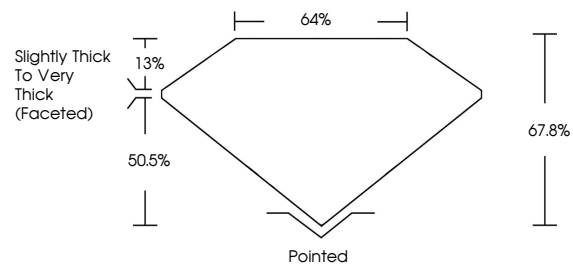
LG798610342
Report verification at igi.org



May 9, 2026
IGI Report Number **LG798610342**
Description **LABORATORY GROWN DIAMOND**
Shape and Cutting Style **CUSHION MODIFIED BRILLIANT**
Measurements **9.45 X 6.90 X 4.68 MM**
GRADING RESULTS
Carat Weight **2.47 CARATS**
Color Grade **E**
Clarity Grade **VS 1**

May 9, 2026
IGI Report Number **LG798610342**
Description **LABORATORY GROWN DIAMOND**
Shape and Cutting Style **CUSHION MODIFIED BRILLIANT**
Measurements **9.45 X 6.90 X 4.68 MM**

PROPORTIONS

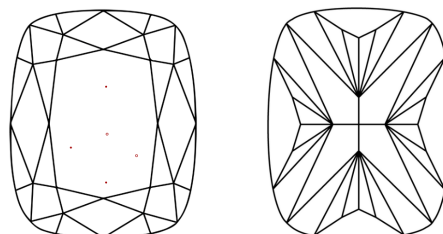


Sample Image Used

GRADING RESULTS

Carat Weight **2.47 CARATS**
Color Grade **E**
Clarity Grade **VS 1**

CLARITY CHARACTERISTICS



KEY TO SYMBOLS

Red symbols indicate internal characteristics.
Green symbols indicate external characteristics.

ADDITIONAL GRADING INFORMATION

Polish **EXCELLENT**
Symmetry **EXCELLENT**
Fluorescence **NONE**
Inscription(s) **IGI LG798610342**

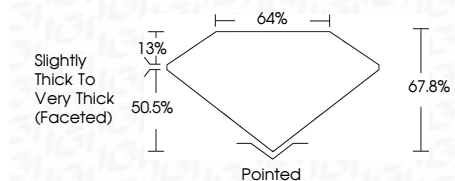
Comments: This Laboratory Grown Diamond was created by Chemical Vapor Deposition (CVD) growth process. Type IIa

COLOR

D E F G H I J Faint Very Light Light

CLARITY

FL	IF	VS ¹⁻²	VS ¹⁻²	SI ¹⁻²	I ¹⁻³
Flawless	Internally Flawless	Very Very Slightly Included	Very Slightly Included	Slightly Included	Included



ADDITIONAL GRADING INFORMATION

Polish **EXCELLENT**
Symmetry **EXCELLENT**
Fluorescence **NONE**
Inscription(s) **IGI LG798610342**
Comments: This Laboratory Grown Diamond was created by Chemical Vapor Deposition (CVD) growth process. Type IIa



May 9, 2026
IGI Report No LG798610342
CUSHION MODIFIED BRILLIANT
9.45 X 6.90 X 4.68 MM
2.47 CARATS
E
2.47 CARATS
E
VS 1
67.8%
50.5%
13%
Slightly Thick To Very Thick (Faceted)
Pointed
EXCELLENT
EXCELLENT
NONE
IGI LG798610342
Comments: This Laboratory Grown Diamond was created by Chemical Vapor Deposition (CVD) growth process. Type IIa