



May 13, 2026

IGI Report Number **LG798609612**

PEAR MODIFIED BRILLIANT

LABORATORY GROWN DIAMOND

7.11 X 4.30 X 2.76 MM

Carat Weight **0.58 CARAT**

Color Grade **FANCY VIVID PINK**

Clarity Grade **VVS 2**

Polish **VERY GOOD**

Symmetry **VERY GOOD**

Fluorescence **SLIGHT**

Inscription(s) **IGI LG798609612**

Comments: This Laboratory Grown Diamond was created by Chemical Vapor Deposition (CVD) growth process. Indications of post-growth treatment.

LABORATORY GROWN DIAMOND REPORT

May 13, 2026

IGI Report Number

LG798609612

Description

LABORATORY GROWN DIAMOND

Shape and Cutting Style

PEAR MODIFIED BRILLIANT

Measurements

7.11 X 4.30 X 2.76 MM

GRADING RESULTS

Carat Weight

0.58 CARAT

Color Grade

FANCY VIVID PINK

Clarity Grade

VVS 2

ADDITIONAL GRADING INFORMATION

Polish

VERY GOOD

Symmetry

VERY GOOD

Fluorescence

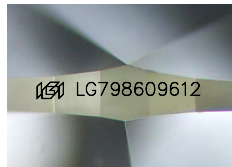
SLIGHT

Inscription(s)

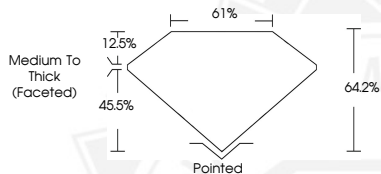
IGI LG798609612

Comments: This Laboratory Grown Diamond was created by Chemical Vapor Deposition (CVD) growth process.

Indications of post-growth treatment.



Sample Image Used



May 13, 2026

IGI Report Number **LG798609612**

PEAR MODIFIED BRILLIANT

LABORATORY GROWN DIAMOND

7.11 X 4.30 X 2.76 MM

Carat Weight **0.58 CARAT**

Color Grade **FANCY VIVID PINK**

Clarity Grade **VVS 2**

Polish **VERY GOOD**

Symmetry **VERY GOOD**

Fluorescence **SLIGHT**

Inscription(s) **IGI LG798609612**

Comments: This Laboratory Grown Diamond was created by Chemical Vapor Deposition (CVD) growth process. Indications of post-growth treatment.



THIS DOCUMENT WAS PRODUCED WITH THE FOLLOWING SECURITY MEASURES: SPECIAL DOCUMENT PAPER, INK SCREENS, WATERMARK, BACKGROUND DESIGNS, HOLOGRAM AND OTHER SECURITY FEATURES NOT LISTED AND DO EXCEED DOCUMENT SECURITY INDUSTRY GUIDELINES.