



May 12, 2026

IGI Report Number LG798609608
PEAR MODIFIED BRILLIANT
LABORATORY GROWN DIAMOND
8.51 X 5.21 X 3.16 MM

Carat Weight 0.95 CARAT
Color Grade FANCY VIVID PINK
Clarity Grade VVS 2
Polish EXCELLENT
Symmetry EXCELLENT
Fluorescence STRONG
Inscription(s) IGI LG798609608

Comments: This Laboratory Grown Diamond was created by Chemical Vapor Deposition (CVD) growth process. Indications of post-growth treatment.

LABORATORY GROWN DIAMOND REPORT

May 12, 2026
IGI Report Number **LG798609608**
Description **LABORATORY GROWN DIAMOND**
Shape and Cutting Style **PEAR MODIFIED BRILLIANT**
Measurements **8.51 X 5.21 X 3.16 MM**

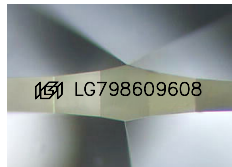
GRADING RESULTS

Carat Weight 0.95 CARAT
Color Grade FANCY VIVID PINK
Clarity Grade VVS 2

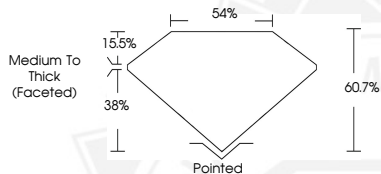
ADDITIONAL GRADING INFORMATION

Polish EXCELLENT
Symmetry EXCELLENT
Fluorescence STRONG
Inscription(s) IGI LG798609608

Comments: This Laboratory Grown Diamond was created by Chemical Vapor Deposition (CVD) growth process. Indications of post-growth treatment.



Sample Image Used



May 12, 2026

IGI Report Number LG798609608
PEAR MODIFIED BRILLIANT
LABORATORY GROWN DIAMOND
8.51 X 5.21 X 3.16 MM

Carat Weight 0.95 CARAT
Color Grade FANCY VIVID PINK
Clarity Grade VVS 2
Polish EXCELLENT
Symmetry EXCELLENT
Fluorescence STRONG
Inscription(s) IGI LG798609608

Comments: This Laboratory Grown Diamond was created by Chemical Vapor Deposition (CVD) growth process. Indications of post-growth treatment.



THIS DOCUMENT WAS PRODUCED WITH THE FOLLOWING SECURITY MEASURES: SPECIAL DOCUMENT PAPER, INK SCREENS, WATERMARK, BACKGROUND DESIGNS, HOLOGRAM AND OTHER SECURITY FEATURES NOT LISTED AND DO EXCEED DOCUMENT SECURITY INDUSTRY GUIDELINES.