



May 12, 2026

IGI Report Number LG798609606
HEXAGONAL MODIFIED STEP CUT
LABORATORY GROWN DIAMOND
8.51 X 3.94 X 2.54 MM

Carat Weight 0.63 CARAT
Color Grade FANCY VIVID PINK
Clarity Grade VS 1
Polish EXCELLENT
Symmetry EXCELLENT
Fluorescence SLIGHT
Inscription(s) IGI LG798609606

Comments: This Laboratory Grown Diamond was created by Chemical Vapor Deposition (CVD) growth process. Indications of post-growth treatment.

LABORATORY GROWN DIAMOND REPORT

May 12, 2026
IGI Report Number **LG798609606**
Description **LABORATORY GROWN DIAMOND**
Shape and Cutting Style **HEXAGONAL MODIFIED STEP CUT**
Measurements **8.51 X 3.94 X 2.54 MM**

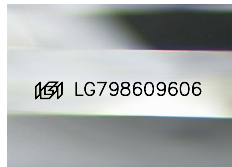
GRADING RESULTS

Carat Weight 0.63 CARAT
Color Grade FANCY VIVID PINK
Clarity Grade VS 1

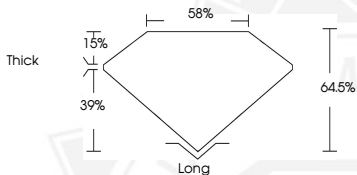
ADDITIONAL GRADING INFORMATION

Polish EXCELLENT
Symmetry EXCELLENT
Fluorescence SLIGHT
Inscription(s) IGI LG798609606

Comments: This Laboratory Grown Diamond was created by Chemical Vapor Deposition (CVD) growth process. Indications of post-growth treatment.



Sample Image Used



May 12, 2026

IGI Report Number LG798609606
HEXAGONAL MODIFIED STEP CUT
LABORATORY GROWN DIAMOND
8.51 X 3.94 X 2.54 MM

Carat Weight 0.63 CARAT
Color Grade FANCY VIVID PINK
Clarity Grade VS 1
Polish EXCELLENT
Symmetry EXCELLENT
Fluorescence SLIGHT
Inscription(s) IGI LG798609606

Comments: This Laboratory Grown Diamond was created by Chemical Vapor Deposition (CVD) growth process. Indications of post-growth treatment.



THIS DOCUMENT WAS PRODUCED WITH THE FOLLOWING SECURITY MEASURES: SPECIAL DOCUMENT PAPER, INK SCREENS, WATERMARK, BACKGROUND DESIGNS, HOLOGRAM AND OTHER SECURITY FEATURES NOT LISTED AND DO EXCEED DOCUMENT SECURITY INDUSTRY GUIDELINES.