



ELECTRONIC COPY

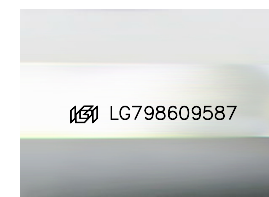
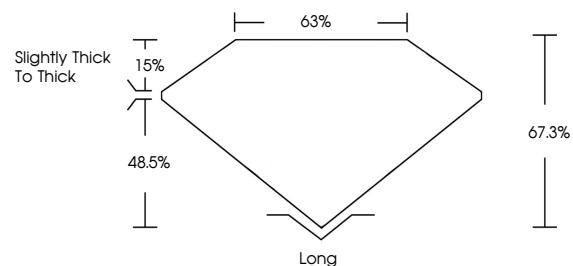
LG798609587
Report verification at igi.org



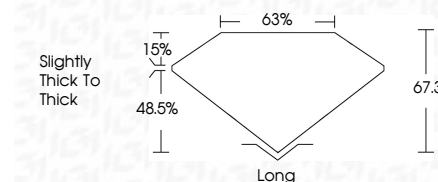
May 15, 2026
IGI Report Number **LG798609587**
Description **LABORATORY GROWN DIAMOND**
Shape and Cutting Style **EMERALD CUT**
Measurements **12.28 X 8.60 X 5.79 MM**
GRADING RESULTS
Carat Weight **6.09 CARATS**
Color Grade **FANCY INTENSE PINK**
Clarity Grade **VVS 2**

May 15, 2026
IGI Report Number **LG798609587**
Description **LABORATORY GROWN DIAMOND**
Shape and Cutting Style **EMERALD CUT**
Measurements **12.28 X 8.60 X 5.79 MM**
GRADING RESULTS
Carat Weight **6.09 CARATS**
Color Grade **FANCY INTENSE PINK**
Clarity Grade **VVS 2**

PROPORTIONS



Sample Image Used



ADDITIONAL GRADING INFORMATION

Polish **EXCELLENT**
Symmetry **EXCELLENT**
Fluorescence **SLIGHT**
Inscription(s) **IGI LG798609587**

Comments: This Laboratory Grown Diamond was created by Chemical Vapor Deposition (CVD) growth process. Indications of post-growth treatment.

ADDITIONAL GRADING INFORMATION

Polish **EXCELLENT**
Symmetry **EXCELLENT**
Fluorescence **SLIGHT**
Inscription(s) **IGI LG798609587**

Comments: This Laboratory Grown Diamond was created by Chemical Vapor Deposition (CVD) growth process. Indications of post-growth treatment.

COLOR

D E F G H I J Faint Very Light Light

CLARITY

FL	IF	VVS ¹⁻²	VS ¹⁻²	SI ¹⁻²	I ¹⁻³
Flawless	Internally Flawless	Very Very Slightly Included	Very Slightly Included	Slightly Included	Included



IGI



May 15, 2026
IGI Report No **LG798609587**
EMERALD CUT
12.28 X 8.60 X 5.79 MM
6.09 CARATS
FANCY INTENSE PINK
VVS 2
67.0%
63%
Slightly thick to thick
Long
EXCELLENT
EXCELLENT
SLIGHT
IGI LG798609587
Comments: This Laboratory Grown Diamond was created by Chemical Vapor Deposition (CVD) growth process. Indications of post-growth treatment.