



ELECTRONIC COPY

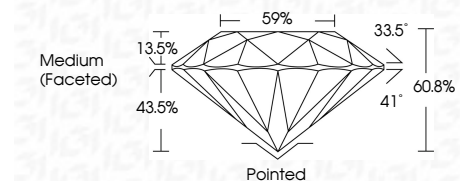
LG798608491
Report verification at igi.org



May 5, 2026
IGI Report Number LG798608491
Description LABORATORY GROWN DIAMOND
Shape and Cutting Style ROUND BRILLIANT
Measurements 6.50 - 6.53 X 3.96 MM

GRADING RESULTS

Carat Weight 1.03 CARAT
Color Grade E
Clarity Grade VVS 2
Cut Grade IDEAL



ADDITIONAL GRADING INFORMATION

Polish EXCELLENT
Symmetry EXCELLENT
Fluorescence NONE
Inscription(s) IGI LG798608491
Comments: This Laboratory Grown Diamond was created by Chemical Vapor Deposition (CVD) growth process. Type IIa



Summary table of diamond characteristics: Round Brilliant, 1.03 Carat, E, VVS 2, IDEAL, 60.8%, 59%, Medium (Faceted), EXCELLENT, EXCELLENT, NONE, IGI LG798608491.

May 5, 2026
IGI Report No LG798608491
ROUND BRILLIANT
6.50 - 6.53 X 3.96 MM
1.03 CARAT
E
VVS 2
IDEAL
60.8%
59%
Medium (Faceted)
EXCELLENT
EXCELLENT
NONE
IGI LG798608491
Comments: This Laboratory Grown Diamond was created by Chemical Vapor Deposition (CVD) growth process. Type IIa

May 5, 2026
IGI Report Number LG798608491
Description LABORATORY GROWN DIAMOND
Shape and Cutting Style ROUND BRILLIANT
Measurements 6.50 - 6.53 X 3.96 MM

GRADING RESULTS

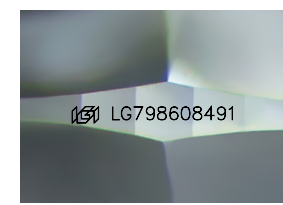
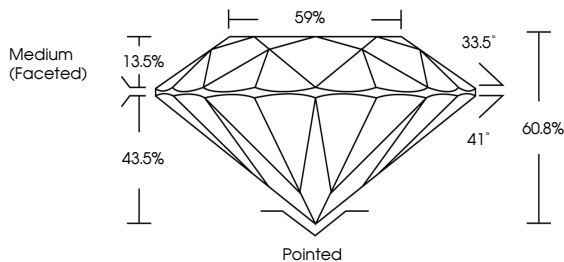
Carat Weight 1.03 CARAT
Color Grade E
Clarity Grade VVS 2
Cut Grade IDEAL

ADDITIONAL GRADING INFORMATION

Polish EXCELLENT
Symmetry EXCELLENT
Fluorescence NONE
Inscription(s) IGI LG798608491

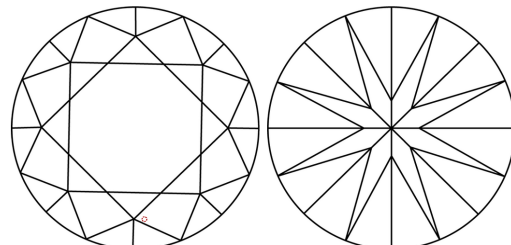
Comments: This Laboratory Grown Diamond was created by Chemical Vapor Deposition (CVD) growth process. Type IIa

PROPORTIONS



Sample Image Used

CLARITY CHARACTERISTICS



KEY TO SYMBOLS

Red symbols indicate internal characteristics.
Green symbols indicate external characteristics.

COLOR

Color scale table: D, E, F, G, H, I, J, Faint, Very Light, Light

CLARITY

Clarity scale table: FL, IF, VVS 1-2, VS 1-2, SI 1-2, I 1-3, Flawless, Internally Flawless, Very Very Slightly Included, Very Slightly Included, Slightly Included, Included

