



ELECTRONIC COPY

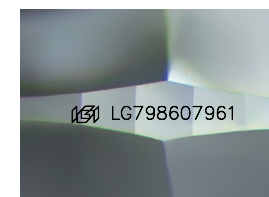
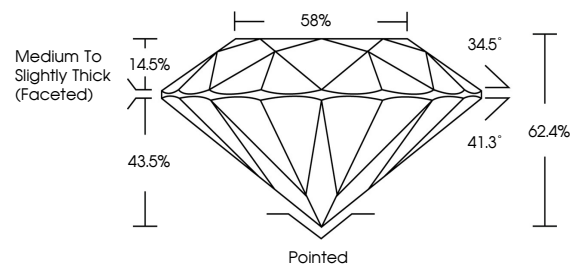
LG798607961 Report verification at igi.org



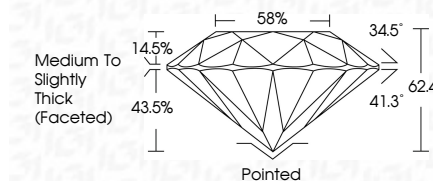
May 12, 2026 IGI Report Number LG798607961 Description LABORATORY GROWN DIAMOND Shape and Cutting Style ROUND BRILLIANT Measurements 6.42 - 6.46 X 4.02 MM GRADING RESULTS Carat Weight 1.03 CARAT Color Grade D Clarity Grade VVS 2 Cut Grade IDEAL

May 12, 2026 IGI Report Number LG798607961 Description LABORATORY GROWN DIAMOND Shape and Cutting Style ROUND BRILLIANT Measurements 6.42 - 6.46 X 4.02 MM GRADING RESULTS Carat Weight 1.03 CARAT Color Grade D Clarity Grade VVS 2 Cut Grade IDEAL

PROPORTIONS



Sample Image Used



ADDITIONAL GRADING INFORMATION

Polish EXCELLENT Symmetry EXCELLENT Fluorescence NONE Inscription(s) IGI LG798607961

Comments: This Laboratory Grown Diamond was created by Chemical Vapor Deposition (CVD) growth process. Type IIa

ADDITIONAL GRADING INFORMATION

Polish EXCELLENT Symmetry EXCELLENT Fluorescence NONE Inscription(s) IGI LG798607961 Comments: This Laboratory Grown Diamond was created by Chemical Vapor Deposition (CVD) growth process. Type IIa

COLOR

D E F G H I J Faint Very Light Light

CLARITY

FL IF VS 1-2 VS 1-2 SI 1-2 I 1-3 Flawless Internally Flawless Very Very Slightly Included Very Slightly Included Slightly Included Included



Summary of report details: May 12, 2026 IGI Report No LG798607961 ROUND BRILLIANT 6.42 - 6.46 X 4.02 MM 1.03 CARAT D VVS 2 IDEAL 62.4% 58% Medium To Slightly Thick (Faceted) Pointed EXCELLENT EXCELLENT NONE IGI LG798607961

Comments: This Laboratory Grown Diamond was created by Chemical Vapor Deposition (CVD) growth process. Type IIa