



LABORATORY GROWN DIAMOND REPORT

May 5, 2026
 IGI Report Number **LG798606845**
 Description **LABORATORY GROWN DIAMOND**
 Shape and Cutting Style **PRINCESS CUT**
 Measurements **5.23 X 5.10 X 3.62 MM**

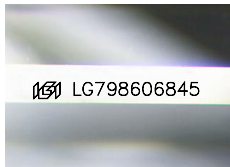
GRADING RESULTS

Carat Weight **0.86 CARAT**
 Color Grade **D**
 Clarity Grade **VVS 1**

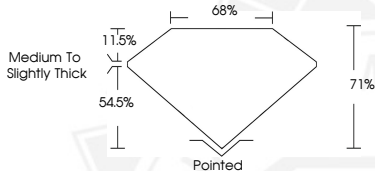
ADDITIONAL GRADING INFORMATION

Polish **VERY GOOD**
 Symmetry **EXCELLENT**
 Fluorescence **NONE**
 Inscription(s) **IGI LG798606845**

Comments: This Laboratory Grown Diamond was created by Chemical Vapor Deposition (CVD) growth process. Type IIa



Sample Image Used



May 5, 2026
 IGI Report Number **LG798606845**
PRINCESS CUT
LABORATORY GROWN DIAMOND
5.23 X 5.10 X 3.62 MM
 Carat Weight **0.86 CARAT**
 Color Grade **D**
 Clarity Grade **VVS 1**
 Polish **VERY GOOD**
 Symmetry **EXCELLENT**
 Fluorescence **NONE**
 Inscription(s) **IGI LG798606845**

Comments: This Laboratory Grown Diamond was created by Chemical Vapor Deposition (CVD) growth process. Type IIa



May 5, 2026
 IGI Report Number **LG798606845**
PRINCESS CUT
LABORATORY GROWN DIAMOND
5.23 X 5.10 X 3.62 MM
 Carat Weight **0.86 CARAT**
 Color Grade **D**
 Clarity Grade **VVS 1**
 Polish **VERY GOOD**
 Symmetry **EXCELLENT**
 Fluorescence **NONE**
 Inscription(s) **IGI LG798606845**

Comments: This Laboratory Grown Diamond was created by Chemical Vapor Deposition (CVD) growth process. Type IIa



THIS DOCUMENT WAS PRODUCED WITH THE FOLLOWING SECURITY MEASURES: SPECIAL DOCUMENT PAPER, INK SCREENS, WATERMARK, BACKGROUND DESIGNS, HOLOGRAM AND OTHER SECURITY FEATURES NOT LISTED AND DO EXCEED DOCUMENT SECURITY INDUSTRY GUIDELINES.