



ELECTRONIC COPY

LG798606641
Report verification at igi.org



May 7, 2026

IGI Report Number **LG798606641**

Description **LABORATORY GROWN DIAMOND**

Shape and Cutting Style **ROUND BRILLIANT**

Measurements **6.45 - 6.48 X 4.10 MM**

GRADING RESULTS

Carat Weight **1.06 CARAT**

Color Grade **D**

Clarity Grade **VVS 2**

Cut Grade **EXCELLENT**

May 7, 2026

IGI Report Number **LG798606641**

Description **LABORATORY GROWN DIAMOND**

Shape and Cutting Style **ROUND BRILLIANT**

Measurements **6.45 - 6.48 X 4.10 MM**

GRADING RESULTS

Carat Weight **1.06 CARAT**

Color Grade **D**

Clarity Grade **VVS 2**

Cut Grade **EXCELLENT**

ADDITIONAL GRADING INFORMATION

Polish **EXCELLENT**

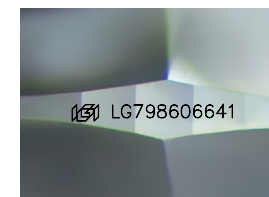
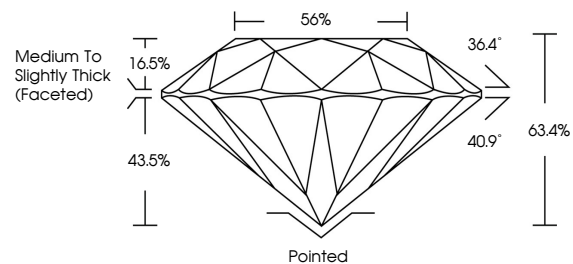
Symmetry **EXCELLENT**

Fluorescence **NONE**

Inscription(s) **IGI LG798606641**

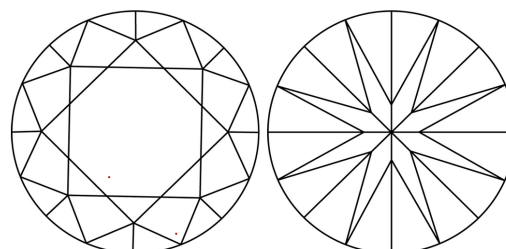
Comments: This Laboratory Grown Diamond was created by Chemical Vapor Deposition (CVD) growth process. Type IIa

PROPORTIONS



Sample Image Used

CLARITY CHARACTERISTICS



KEY TO SYMBOLS

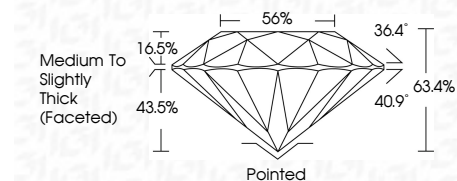
Red symbols indicate internal characteristics.
Green symbols indicate external characteristics.

COLOR

D E F G H I J Faint Very Light Light

CLARITY

FL	IF	VVS ¹⁻²	VS ¹⁻²	SI ¹⁻²	I ¹⁻³
Flawless	Internally Flawless	Very Very Slightly Included	Very Slightly Included	Slightly Included	Included



ADDITIONAL GRADING INFORMATION

Polish **EXCELLENT**

Symmetry **EXCELLENT**

Fluorescence **NONE**

Inscription(s) **IGI LG798606641**

Comments: This Laboratory Grown Diamond was created by Chemical Vapor Deposition (CVD) growth process. Type IIa



IGI



May 7, 2026	IGI Report No LG798606641	1.06 CARAT	D
ROUND BRILLIANT	6.45 - 6.48 X 4.10 MM	VVS 2	EXCELLENT
Carat Weight	Color Grade	Depth	Table
6.45 - 6.48 X 4.10 MM	D	63.4%	56%
Color Grade	Clarity Grade	Grade	Medium To Slightly Thick (Faceted)
EXCELLENT	VVS 2	Pointed	Pointed
Depth	Cut Grade	Symmetry	EXCELLENT
63.4%	EXCELLENT	Fluorescence	EXCELLENT
Table	Grade	Inscription(s)	NONE
56%	Medium To Slightly Thick (Faceted)	IGI LG798606641	NONE
Grade	Culet	Comments:	This Laboratory Grown Diamond was created by Chemical Vapor Deposition (CVD) growth process. Type IIa
Pointed	Polish		
EXCELLENT	Symmetry		
EXCELLENT	Fluorescence		
NONE	Inscription(s)		
IGI LG798606641			