



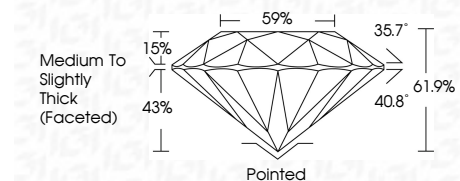
ELECTRONIC COPY

LG798603860 Report verification at igi.org



May 6, 2026 IGI Report Number LG798603860 Description LABORATORY GROWN DIAMOND Shape and Cutting Style ROUND BRILLIANT Measurements 6.58 - 6.60 X 4.08 MM

GRADING RESULTS Carat Weight 1.10 CARAT Color Grade F Clarity Grade VS 1 Cut Grade IDEAL



ADDITIONAL GRADING INFORMATION Polish EXCELLENT Symmetry EXCELLENT Fluorescence NONE Inscription(s) LG798603860 Comments: This Laboratory Grown Diamond was created by Chemical Vapor Deposition (CVD) growth process. Type IIa



May 6, 2026 IGI Report No LG798603860 ROUND BRILLIANT 6.58 - 6.60 X 4.08 MM 1.10 CARAT F VS 1 IDEAL 61.9% 59% Medium To Slightly Thick (Faceted) Pointed EXCELLENT EXCELLENT NONE NONE LG798603860

LABORATORY GROWN DIAMOND REPORT

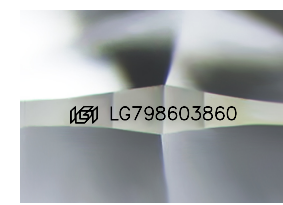
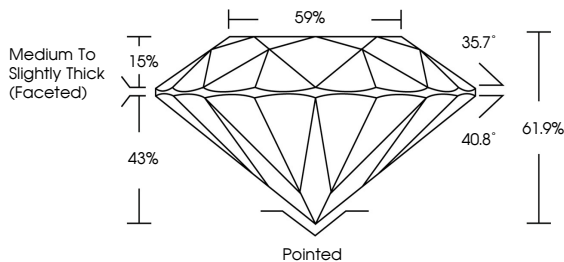
May 6, 2026 IGI Report Number LG798603860 Description LABORATORY GROWN DIAMOND Shape and Cutting Style ROUND BRILLIANT Measurements 6.58 - 6.60 X 4.08 MM

GRADING RESULTS Carat Weight 1.10 CARAT Color Grade F Clarity Grade VS 1 Cut Grade IDEAL

ADDITIONAL GRADING INFORMATION Polish EXCELLENT Symmetry EXCELLENT Fluorescence NONE Inscription(s) LG798603860

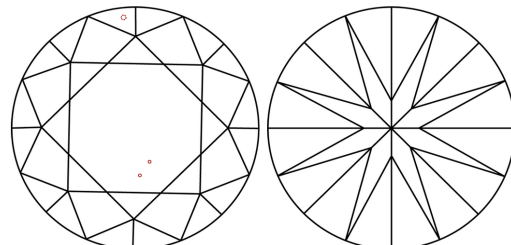
Comments: This Laboratory Grown Diamond was created by Chemical Vapor Deposition (CVD) growth process. Type IIa

PROPORTIONS



Sample Image Used

CLARITY CHARACTERISTICS



KEY TO SYMBOLS Red symbols indicate internal characteristics. Green symbols indicate external characteristics.

Table with columns D, E, F, G, H, I, J, Faint, Very Light, Light

Table with columns FL, IF, VS 1-2, VS 1-2, SI 1-2, I 1-3 and corresponding descriptions: Flawless, Internally Flawless, Very Very Slightly Included, Very Slightly Included, Slightly Included, Included



May 6, 2026 IGI Report No LG798603860 ROUND BRILLIANT 6.58 - 6.60 X 4.08 MM 1.10 CARAT F VS 1 IDEAL 61.9% 59% Medium To Slightly Thick (Faceted) Pointed EXCELLENT EXCELLENT NONE NONE LG798603860