



**ELECTRONIC COPY**

LG798603451  
Report verification at igi.org



May 5, 2026

IGI Report Number **LG798603451**

Description **LABORATORY GROWN DIAMOND**

Shape and Cutting Style **ROUND BRILLIANT**

Measurements **10.29 - 10.35 X 6.01 MM**

**GRADING RESULTS**

Carat Weight **3.98 CARATS**

Color Grade **F**

Clarity Grade **VVS 2**

Cut Grade **EXCELLENT**

May 5, 2026

IGI Report Number **LG798603451**

Description **LABORATORY GROWN DIAMOND**

Shape and Cutting Style **ROUND BRILLIANT**

Measurements **10.29 - 10.35 X 6.01 MM**

**GRADING RESULTS**

Carat Weight **3.98 CARATS**

Color Grade **F**

Clarity Grade **VVS 2**

Cut Grade **EXCELLENT**

**ADDITIONAL GRADING INFORMATION**

Polish **EXCELLENT**

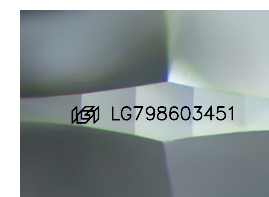
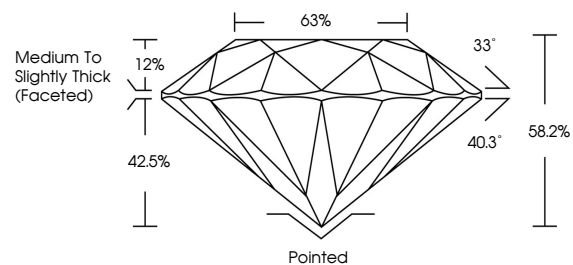
Symmetry **EXCELLENT**

Fluorescence **NONE**

Inscription(s) **LG798603451**

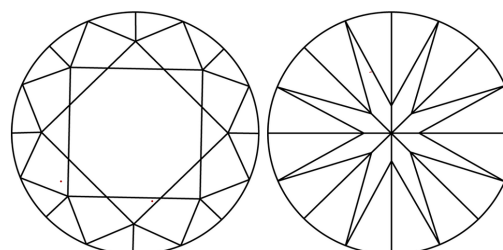
Comments: This Laboratory Grown Diamond was created by Chemical Vapor Deposition (CVD) growth process. Type IIa

**PROPORTIONS**



Sample Image Used

**CLARITY CHARACTERISTICS**



**KEY TO SYMBOLS**

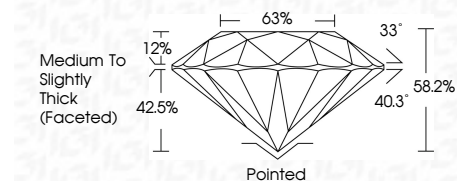
Red symbols indicate internal characteristics.  
Green symbols indicate external characteristics.

**COLOR**

D E F G H I J Faint Very Light Light

**CLARITY**

FL	IF	VVS <sup>1-2</sup>	VS <sup>1-2</sup>	SI <sup>1-2</sup>	I <sup>1-3</sup>
Flawless	Internally Flawless	Very Very Slightly Included	Very Slightly Included	Slightly Included	Included



**ADDITIONAL GRADING INFORMATION**

Polish **EXCELLENT**

Symmetry **EXCELLENT**

Fluorescence **NONE**

Inscription(s) **LG798603451**

Comments: This Laboratory Grown Diamond was created by Chemical Vapor Deposition (CVD) growth process. Type IIa



**IGI**



May 5, 2026  
IGI Report No LG798603451  
**ROUND BRILLIANT**

**3.98 CARATS**  
Color Grade **F**

**VVS 2**  
Clarity Grade **EXCELLENT**

**63%**  
Depth **EXCELLENT**

**33°**  
Table **EXCELLENT**

**40.3°**  
Crown Angle **EXCELLENT**

**12%**  
Crown Height **EXCELLENT**

**42.5%**  
Pavilion Height **EXCELLENT**

**58.2%**  
Total Height **EXCELLENT**

**Pointed**  
Culet **EXCELLENT**

**EXCELLENT**  
Polish **EXCELLENT**

**EXCELLENT**  
Symmetry **EXCELLENT**

**NONE**  
Fluorescence **EXCELLENT**

**IGI LG798603451**  
Inscription(s)

Comments: This Laboratory Grown Diamond was created by Chemical Vapor Deposition (CVD) growth process. Type IIa