



**ELECTRONIC COPY**

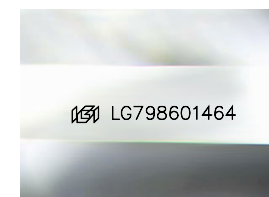
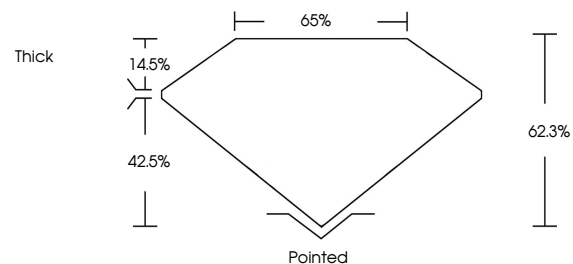
LG798601464  
Report verification at igi.org



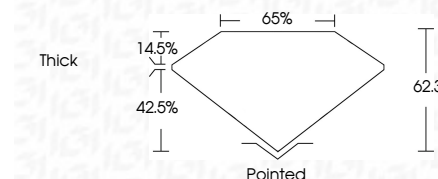
May 8, 2026  
IGI Report Number **LG798601464**  
Description **LABORATORY GROWN DIAMOND**  
Shape and Cutting Style **SQUARE CUT CORNERED  
MODIFIED BRILLIANT**  
Measurements **6.63 X 6.55 X 4.08 MM**  
**GRADING RESULTS**  
Carat Weight **1.70 CARAT**  
Color Grade **FANCY VIVID YELLOW**  
Clarity Grade **VVS 2**

May 8, 2026  
IGI Report Number **LG798601464**  
Description **LABORATORY GROWN DIAMOND**  
Shape and Cutting Style **SQUARE CUT CORNERED  
MODIFIED BRILLIANT**  
Measurements **6.63 X 6.55 X 4.08 MM**  
**GRADING RESULTS**  
Carat Weight **1.70 CARAT**  
Color Grade **FANCY VIVID YELLOW**  
Clarity Grade **VVS 2**

**PROPORTIONS**



Sample Image Used



**ADDITIONAL GRADING INFORMATION**

Polish **EXCELLENT**  
Symmetry **EXCELLENT**  
Fluorescence **NONE**  
Inscription(s) **IGI LG798601464**

Comments: This Laboratory Grown Diamond was created by Chemical Vapor Deposition (CVD) growth process.

**ADDITIONAL GRADING INFORMATION**

Polish **EXCELLENT**  
Symmetry **EXCELLENT**  
Fluorescence **NONE**  
Inscription(s) **IGI LG798601464**  
Comments: This Laboratory Grown Diamond was created by Chemical Vapor Deposition (CVD) growth process.

**COLOR**

D E F G H I J Faint Very Light Light

**CLARITY**

FL	IF	VVS <sup>1-2</sup>	VS <sup>1-2</sup>	SI <sup>1-2</sup>	I <sup>1-3</sup>
Flawless	Internally Flawless	Very Very Slightly Included	Very Slightly Included	Slightly Included	Included



**IGI**



May 8, 2026  
IGI Report No **LG798601464**  
**SQUARE CUT CORNERED MODIFIED BRILLIANT**  
6.63 X 6.55 X 4.08 MM  
Carat Weight **1.70 CARAT**  
Color Grade **FANCY VIVID YELLOW**  
Clarity Grade **VVS 2**  
Depth **62.3%**  
Table **65%**  
Girdle **Thick**  
Culet **Pointed**  
Polish **EXCELLENT**  
Symmetry **EXCELLENT**  
Fluorescence **NONE**  
Inscription(s) **IGI LG798601464**

Comments: This Laboratory Grown Diamond was created by Chemical Vapor Deposition (CVD) growth process.